

## ARG40516 anti-NUCB1 / Nucleobindin 1 antibody

Package: 50 µl  
Store at: -20°C

### Summary

|                     |  |
|---------------------|--|
| Product Description | Rabbit Polyclonal antibody recognizes NUCB1 / Nucleobindin 1   |
| Tested Reactivity   | Rat  |
| Predict Reactivity  | Ms, Dog  |
| Tested Application  | IHC-P  |
| Host                | Rabbit   |
| Clonality           | Polyclonal   |
| Isotype             | IgG  |
| Target Name         | NUCB1 / Nucleobindin 1   |
| Species             | Rat  |
| Immunogen           | Synthetic peptide corresponding to a region of Rat NUCB1 / Nucleobindin 1. (within the following region: SQPDGQLQFRADTGDAPVPAPAGDQKDVPASEKKVPEQPPVLPQLDSQHL) |
| Conjugation         | Un-conjugated  |
| Alternate Names     | CALNUC; NUC; Nucleobindin-1  |

### Application Instructions

| Predict Reactivity Note | Predicted Homology Based On Immunogen Sequence: Dog: 78%; Mouse: 92%   |             |          |       |                 |
|-------------------------|--|-------------|----------|-------|-----------------|
| Application table       | <table> <tr> <th>Application</th><th>Dilution</th></tr> <tr> <td>IHC-P</td><td>Assay-dependent</td></tr> </table>                          | Application | Dilution | IHC-P | Assay-dependent |
| Application             | Dilution   |             |          |       |                 |
| IHC-P                   | Assay-dependent  |             |          |       |                 |
| Application Note        | * The dilutions indicate recommended starting dilutions and the optimal dilutions or concentrations should be determined by the scientist. |             |          |       |                 |

### Properties

|                     |  |
|---------------------|--|
| Form                | Liquid   |
| Purification        | Purification with Protein A.   |
| Buffer              | PBS, 0.09% (w/v) Sodium azide and 2% Sucrose.  |
| Preservative        | 0.09% (w/v) Sodium azide   |
| Stabilizer          | 2% Sucrose   |
| Concentration       | Batch dependent: 0.5 - 1 mg/ml   |
| Storage instruction | For continuous use, store undiluted antibody at 2-8°C for up to a week. For long-term storage, aliquot and store at -20°C or below. Storage in frost free freezers is not recommended. Avoid repeated freeze/thaw cycles. Suggest spin the vial prior to opening. The antibody solution should be gently mixed before use. |

**Note**

For laboratory research only, not for drug, diagnostic or other use.

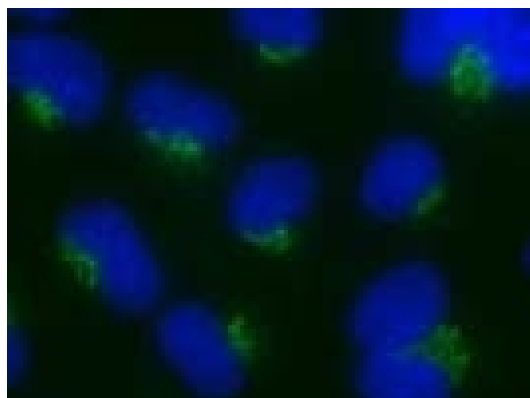
## Bioinformation

---

|                       |  |
|-----------------------|--|
| Gene Symbol           | NUCB1  |
| Gene Full Name        | nucleobindin 1   |
| Background            | This gene encodes a member of a small calcium-binding EF-hand protein family. The encoded protein is thought to have a key role in Golgi calcium homeostasis and Ca(2+)-regulated signal transduction events. [provided by RefSeq, Jun 2010] |
| Function              | Major calcium-binding protein of the Golgi. May have a role in calcium homeostasis (By similarity). [UniProt]  |
| Calculated Mw         | 54 kDa   |
| PTM                   | O-glycosylated. [UniProt]  |
| Cellular Localization | Golgi apparatus, cis-Golgi network membrane; Peripheral membrane protein; Lumenal side. Cytoplasm. Secreted. Note=A small fraction of the protein may be cytoplasmic. [UniProt]  |

## Images

---



ARG40516 anti-NUCB1 / Nucleobindin 1 antibody IHC-P image

Immunohistochemistry: Paraffin-embedded sections of Rat NRK stained with ARG40516 anti-NUCB1 / Nucleobindin 1 antibody.