

ARG40526 anti-NUCB1 / Nucleobindin 1 antibody

Package: 50 µl
Store at: -20°C

Summary

Product Description	Rabbit Polyclonal antibody recognizes NUCB1 / Nucleobindin 1
Tested Reactivity	Hu, Ms, Rat
Tested Application	ICC/IF, WB
Host	Rabbit
Clonality	Polyclonal
Isotype	IgG
Target Name	NUCB1 / Nucleobindin 1
Species	Human
Immunogen	Recombinant fusion protein corresponding to aa. 302-461 of Human NUCB1 / Nucleobindin 1 (NP_006175.2).
Conjugation	Un-conjugated
Alternate Names	CALNUC; NUC; Nucleobindin-1

Application Instructions

Application table	Application	Dilution
	ICC/IF	1:50 - 1:200
	WB	1:500 - 1:2000
Application Note	* The dilutions indicate recommended starting dilutions and the optimal dilutions or concentrations should be determined by the scientist.	
Positive Control	293T	
Observed Size	60 kDa	

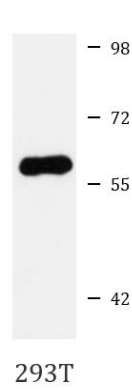
Properties

Form	Liquid
Purification	Affinity purified.
Buffer	PBS (pH 7.3), 0.02% Sodium azide and 50% Glycerol.
Preservative	0.02% Sodium azide
Stabilizer	50% Glycerol
Storage instruction	For continuous use, store undiluted antibody at 2-8°C for up to a week. For long-term storage, aliquot and store at -20°C. Storage in frost free freezers is not recommended. Avoid repeated freeze/thaw cycles. Suggest spin the vial prior to opening. The antibody solution should be gently mixed before use.
Note	For laboratory research only, not for drug, diagnostic or other use.

Bioinformation

Gene Symbol	NUCB1
Gene Full Name	nucleobindin 1
Background	This gene encodes a member of a small calcium-binding EF-hand protein family. The encoded protein is thought to have a key role in Golgi calcium homeostasis and Ca(2+)-regulated signal transduction events. [provided by RefSeq, Jun 2010]
Function	Major calcium-binding protein of the Golgi. May have a role in calcium homeostasis (By similarity). [UniProt]
Calculated Mw	54 kDa
PTM	O-glycosylated. [UniProt]
Cellular Localization	Golgi apparatus, cis-Golgi network membrane; Peripheral membrane protein; Lumenal side. Cytoplasm. Secreted. Note=A small fraction of the protein may be cytoplasmic. [UniProt]

Images



ARG40526 anti-NUCB1 / Nucleobindin 1 antibody WB image

Western blot: 25 µg of 293T cell lysate stained with ARG40526 anti-NUCB1 / Nucleobindin 1 antibody at 1:3000 dilution.