

ARG40577 anti-alpha Tubulin antibody

Package: 100 µl
Store at: -20°C

Summary

Product Description	Rabbit Polyclonal antibody recognizes alpha Tubulin
Tested Reactivity	<i>S. cerevisiae</i>
Tested Application	WB
Host	Rabbit
Clonality	Polyclonal
Isotype	IgG
Target Name	alpha Tubulin
Species	Yeast
Immunogen	Synthetic peptide derived from yeast alpha Tubulin.
Conjugation	Un-conjugated

Application Instructions

Application table	Application	Dilution
	WB	1:3000 - 1:10000
Application Note	* The dilutions indicate recommended starting dilutions and the optimal dilutions or concentrations should be determined by the scientist.	

Properties

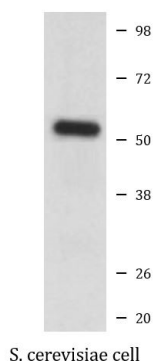
Form	Liquid
Purification	Affinity purified.
Buffer	PBS (pH 7.4), 150 mM NaCl, 0.02% Sodium azide and 50% Glycerol.
Preservative	0.02% Sodium azide
Stabilizer	50% Glycerol
Storage instruction	For continuous use, store undiluted antibody at 2-8°C for up to a week. For long-term storage, aliquot and store at -20°C. Storage in frost free freezers is not recommended. Avoid repeated freeze/thaw cycles. Suggest spin the vial prior to opening. The antibody solution should be gently mixed before use.
Note	For laboratory research only, not for drug, diagnostic or other use.

Bioinformation

Gene Symbol	TUB1
Gene Full Name	alpha-tubulin TUB1

Function	Tubulin is the major constituent of microtubules. It binds two moles of GTP, one at an exchangeable site on the beta chain and one at a non-exchangeable site on the alpha chain. [UniProt]
Research Area	Signaling Transduction antibody; Loading Control antibody
Calculated Mw	50 kDa

Images



ARG40577 anti-alpha Tubulin antibody WB image

Western blot: *Saccharomyces cerevisiae* (yeast) cell lysate stained with ARG40577 anti-alpha Tubulin antibody.