

ARG40619 anti-FOXG1 antibody

Package: 100 µl
Store at: -20°C

Summary

Product Description	Rabbit Polyclonal antibody recognizes FOXG1
Tested Reactivity	Hu, Ms, Rat
Tested Application	ICC/IF, WB
Host	Rabbit
Clonality	Polyclonal
Isotype	IgG
Target Name	FOXG1
Species	Human
Immunogen	Synthetic peptide of Human FOXG1.
Conjugation	Un-conjugated
Alternate Names	hBF-2; QIN; BF-2; FOXG1C; FOXG1B; FOXG1A; BF-1; HBF2; BF2; BF1; Forkhead box protein G1; Forkhead box protein G1A; Forkhead box protein G1B; Forkhead box protein G1C; FKHL2; FKHL3; Forkhead-related protein FKHL2; FKHL1; FKHL4; FKHL2; HFK3; HFK2; HFK1; KHL2; Forkhead-related protein FKHL1; Forkhead-related protein FKHL3; HBF-2; HBF-3; HBF-1; Brain factor 2; Brain factor 1; HBF-G2; FHL3

Application Instructions

Application table	Application	Dilution
	ICC/IF	1:50 - 1:200
	WB	1:500 - 1:2000
Application Note	* The dilutions indicate recommended starting dilutions and the optimal dilutions or concentrations should be determined by the scientist.	
Positive Control	Rat kidney	
Observed Size	52 kDa	

Properties

Form	Liquid
Purification	Affinity purified.
Buffer	PBS (pH 7.3), 0.02% Sodium azide and 50% Glycerol.
Preservative	0.02% Sodium azide
Stabilizer	50% Glycerol
Storage instruction	For continuous use, store undiluted antibody at 2-8°C for up to a week. For long-term storage, aliquot and store at -20°C. Storage in frost free freezers is not recommended. Avoid repeated freeze/thaw cycles. Suggest spin the vial prior to opening. The antibody solution should be gently mixed before use.

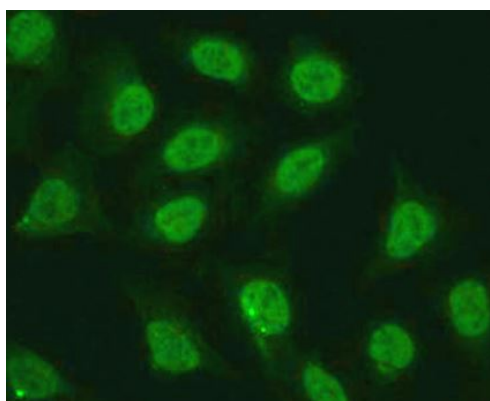
Note

For laboratory research only, not for drug, diagnostic or other use.

Bioinformation

Gene Symbol	FOXG1
Gene Full Name	forkhead box G1
Background	This locus encodes a member of the forked-head transcription factor family. The encoded protein, which functions as a repressor, may play a role in brain development. Mutations at this locus have been associated with Rett syndrome. [provided by RefSeq, Feb 2012]
Function	Transcription repression factor which plays an important role in the establishment of the regional subdivision of the developing brain and in the development of the telencephalon. [UniProt]
Calculated Mw	52 kDa
Cellular Localization	Nucleus. [UniProt]

Images



ARG40619 anti-FOXG1 antibody ICC/IF image

Immunofluorescence: U2OS cells stained with ARG40619 anti-FOXG1 antibody at 1:100 dilution.



Rat kidney

ARG40619 anti-FOXG1 antibody WB image

Western blot: 25 µg of Rat kidney lysate stained with ARG40619 anti-FOXG1 antibody at 1:1000 dilution.