

ARG40675 anti-PAI1 / SERPINE1 antibody

Package: 100 µl
Store at: -20°C

Summary

Product Description	Rabbit Polyclonal antibody recognizes PAI1 / SERPINE1
Tested Reactivity	Hu
Tested Application	FACS, ICC/IF, IP, WB
Host	Rabbit
Clonality	Polyclonal
Isotype	IgG
Target Name	PAI1 / SERPINE1
Species	Human
Immunogen	Synthetic peptide derived from Human PAI1 / SERPINE1.
Conjugation	Un-conjugated
Alternate Names	Serpin E1; PLANH1; Endothelial plasminogen activator inhibitor; Plasminogen activator inhibitor 1; PAI; PAI1; PAI-1

Application Instructions

Application table	Application	Dilution
	FACS	1:50
	ICC/IF	1:50 - 1:200
	IP	1:30
	WB	1:500 - 1:1000
Application Note	* The dilutions indicate recommended starting dilutions and the optimal dilutions or concentrations should be determined by the scientist.	

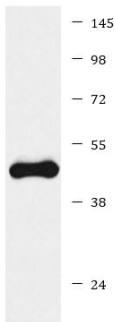
Properties

Form	Liquid
Purification	Affinity purified.
Buffer	PBS (pH 7.4), 150 mM NaCl, 0.02% Sodium azide and 50% Glycerol.
Preservative	0.02% Sodium azide
Stabilizer	50% Glycerol
Storage instruction	For continuous use, store undiluted antibody at 2-8°C for up to a week. For long-term storage, aliquot and store at -20°C. Storage in frost free freezers is not recommended. Avoid repeated freeze/thaw cycles. Suggest spin the vial prior to opening. The antibody solution should be gently mixed before use.
Note	For laboratory research only, not for drug, diagnostic or other use.

Bioinformation

Gene Symbol	SERPINE1
Gene Full Name	serpin peptidase inhibitor, clade E (nexin, plasminogen activator inhibitor type 1), member 1
Background	<p>This gene encodes a member of the serine proteinase inhibitor (serpin) superfamily. This member is the principal inhibitor of tissue plasminogen activator (tPA) and urokinase (uPA), and hence is an inhibitor of fibrinolysis. Defects in this gene are the cause of plasminogen activator inhibitor-1 deficiency (PAI-1 deficiency), and high concentrations of the gene product are associated with thrombophilia. Alternatively spliced transcript variants encoding different isoforms have been found for this gene. [provided by RefSeq, Sep 2009]</p>
Function	<p>Serine protease inhibitor. This inhibitor acts as 'bait' for tissue plasminogen activator, urokinase, protein C and matriptase-3/TMPRSS7. Its rapid interaction with PLAT may function as a major control point in the regulation of fibrinolysis. [UniProt]</p>
Calculated Mw	45 kDa
PTM	<p>Inactivated by proteolytic attack of the urokinase-type (u-PA) and the tissue-type (TPA), cleaving the 369-Arg- -Met-370 bond. [UniProt]</p>
Cellular Localization	Secreted. [UniProt]

Images



HepG2

ARG40675 anti-PAI1 / SERPINE1 antibody WB image

Western blot: HepG2 cell lysate stained with ARG40675 anti-PAI1 / SERPINE1 antibody.