

ARG40716 anti-Cyclin M2 antibody

Package: 100 µl
Store at: -20°C

Summary

Product Description	Rabbit Polyclonal antibody recognizes Cyclin M2
Tested Reactivity	Hu
Predict Reactivity	Ms, Rat
Tested Application	WB
Host	Rabbit
Clonality	Polyclonal
Isotype	IgG
Target Name	Cyclin M2
Species	Human
Immunogen	KLH-conjugated synthetic peptide within the center region of Human Cyclin M2.
Conjugation	Un-conjugated
Alternate Names	HOMGSMR; ACDP2; Metal transporter CNNM2; HOMG6; Ancient conserved domain-containing protein 2; Cyclin-M2

Application Instructions

Application table	<table> <tr> <th>Application</th><th>Dilution</th></tr> <tr> <td>WB</td><td>1:500 - 1:1000</td></tr> </table>	Application	Dilution	WB	1:500 - 1:1000
Application	Dilution				
WB	1:500 - 1:1000				
Application Note	* The dilutions indicate recommended starting dilutions and the optimal dilutions or concentrations should be determined by the scientist.				
Observed Size	98 kDa				

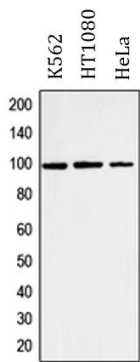
Properties

Form	Liquid
Purification	Affinity purification with immunogen.
Buffer	0.42% Potassium phosphate (pH 7.3), 0.87% NaCl, 0.01% Sodium azide and 30% Glycerol.
Preservative	0.01% Sodium azide
Stabilizer	30% Glycerol
Storage instruction	For continuous use, store undiluted antibody at 2-8°C for up to a week. For long-term storage, aliquot and store at -20°C. Storage in frost free freezers is not recommended. Avoid repeated freeze/thaw cycles. Suggest spin the vial prior to opening. The antibody solution should be gently mixed before use.
Note	For laboratory research only, not for drug, diagnostic or other use.

Bioinformation

Gene Symbol	CNNM2
Gene Full Name	cyclin and CBS domain divalent metal cation transport mediator 2
Background	This gene encodes a member of the ancient conserved domain containing protein family. Members of this protein family contain a cyclin box motif and have structural similarity to the cyclins. The encoded protein may play an important role in magnesium homeostasis by mediating the epithelial transport and renal reabsorption of Mg2+. Mutations in this gene are associated with renal hypomagnesemia. Alternatively spliced transcript variants encoding multiple isoforms have been observed for this gene. [provided by RefSeq, Dec 2011]
Function	Divalent metal cation transporter. Mediates transport of divalent metal cations in an order of Mg(2+) > Co(2+) > Mn(2+) > Sr(2+) > Ba(2+) > Cu(2+) > Fe(2+) (By similarity). [UniProt]
Calculated Mw	97 kDa
Cellular Localization	Cell membrane; Multi-pass membrane protein. [UniProt]

Images



ARG40716 anti-Cyclin M2 antibody WB image

Western blot: K562, HT1080, HeLa whole cell lysates stained with ARG40716 anti-Cyclin M2 antibody.