

## ARG40731 anti-GFRAL antibody

Package: 100 µl  
Store at: -20°C

### Summary

Product Description	Rabbit Polyclonal antibody recognizes GFRAL
Tested Reactivity	Hu
Tested Application	FACS, IHC-P, WB
Host	Rabbit
Clonality	Polyclonal
Isotype	IgG
Target Name	GFRAL
Species	Human
Immunogen	KLH-conjugated synthetic peptide corresponding to aa. 366-394 of Human GFRAL.
Conjugation	Un-conjugated
Alternate Names	UNQ9356; bA360D14.1; GRAL; GDNF family receptor alpha-like; C6orf144

### Application Instructions

Application table	Application	Dilution
	FACS	1:10 - 1:50
	IHC-P	1:50 - 1:100
	WB	1:1000
Application Note	* The dilutions indicate recommended starting dilutions and the optimal dilutions or concentrations should be determined by the scientist.	
Positive Control	MDA-MB-453	

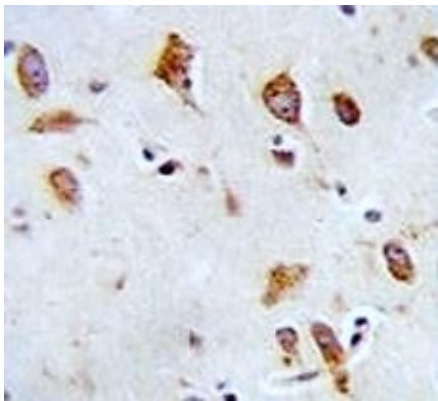
### Properties

Form	Liquid
Purification	Purification with Protein A and immunogen peptide.
Buffer	PBS and 0.09% (W/V) Sodium azide.
Preservative	0.09% (W/V) Sodium azide.
Storage instruction	For continuous use, store undiluted antibody at 2-8°C for up to a week. For long-term storage, aliquot and store at -20°C or below. Storage in frost free freezers is not recommended. Avoid repeated freeze/thaw cycles. Suggest spin the vial prior to opening. The antibody solution should be gently mixed before use.
Note	For laboratory research only, not for drug, diagnostic or other use.

Bioinformation

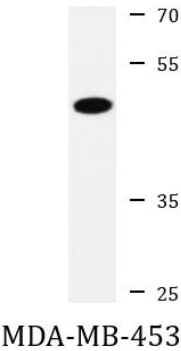
Gene Symbol	GFRAL
Gene Full Name	GDNF family receptor alpha like
Function	Brainstem-restricted receptor for GDF15 which regulates food intake, energy expenditure and body weight in response to metabolic and toxin-induced stresses. Upon interaction with its ligand, GDF15, interacts with RET and induces cellular signaling through activation of MAPK- and AKT- signaling pathways. [UniProt]
Calculated Mw	45 kDa
Cellular Localization	Cell membrane; Single-pass membrane protein; Extracellular side. [UniProt]

Images



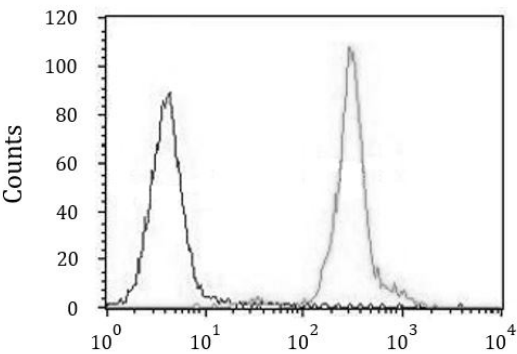
ARG40731 anti-GFRAL antibody IHC-P image

Immunohistochemistry: Formalin-fixed and paraffin-embedded Human brain tissue stained with ARG40731 anti-GFRAL antibody.



ARG40731 anti-GFRAL antibody WB image

Western blot: 20 µg of MDA-MB-453 whole cell lysate stained with ARG40731 anti-GFRAL antibody at 1:1000 dilution.



ARG40731 anti-GFRAL antibody FACS image

Flow Cytometry: MDA-MB-435 cells stained with ARG40731 anti-GFRAL antibody (right histogram) or without primary antibody as control (left histogram), followed by incubation with FITC labelled secondary antibody.