

ARG40818
anti-Phosducin antibodyPackage: 100 µl
Store at: -20°C

Summary

Product Description	Rabbit Polyclonal antibody recognizes Phosducin
Tested Reactivity	Ms, Rat
Tested Application	IHC-P, WB
Host	Rabbit
Clonality	Polyclonal
Isotype	IgG
Target Name	Phosducin
Species	Human
Immunogen	Recombinant fusion protein corresponding to aa. 1-246 of Human Phosducin (NP_002588.3).
Conjugation	Un-conjugated
Alternate Names	MEKA; PHD; 33 kDa phototransducing protein; Phosducin; PhLP; Protein MEKA; PhLOP

Application Instructions

Application table	Application	Dilution
	IHC-P	1:50 - 1:200
	WB	1:500 - 1:2000
Application Note	* The dilutions indicate recommended starting dilutions and the optimal dilutions or concentrations should be determined by the scientist.	

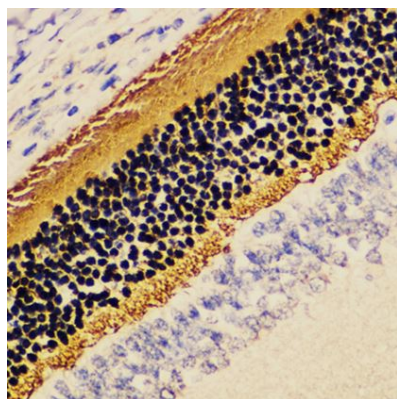
Properties

Form	Liquid
Purification	Affinity purified.
Buffer	PBS (pH 7.3), 0.02% Sodium azide and 50% Glycerol.
Preservative	0.02% Sodium azide
Stabilizer	50% Glycerol
Storage instruction	For continuous use, store undiluted antibody at 2-8°C for up to a week. For long-term storage, aliquot and store at -20°C. Storage in frost free freezers is not recommended. Avoid repeated freeze/thaw cycles. Suggest spin the vial prior to opening. The antibody solution should be gently mixed before use.
Note	For laboratory research only, not for drug, diagnostic or other use.

Bioinformation

Gene Symbol	PDC
Gene Full Name	phosducin
Background	This gene encodes a phosphoprotein, which is located in the outer and inner segments of the rod cells in the retina. This protein may participate in the regulation of visual phototransduction or in the integration of photoreceptor metabolism. It modulates the phototransduction cascade by interacting with the beta and gamma subunits of the retinal G-protein transducin. This gene is a potential candidate gene for retinitis pigmentosa and Usher syndrome type II. Alternatively spliced transcript variants encoding different isoforms have been identified. [provided by RefSeq, Jul 2008]
Function	May participate in the regulation of visual phototransduction or in the integration of photoreceptor metabolism. Inhibits the transcriptional activation activity of the cone-rod homeobox CRX. [UniProt]
Calculated Mw	28 kDa
PTM	Light-induced changes in cyclic nucleotide levels modulate the phosphorylation of this protein by cAMP kinase. [UniProt]
Cellular Localization	Cytoplasm, cytosol. Nucleus. Cell projection, cilium, photoreceptor outer segment. Photoreceptor inner segment. Isoform 2: Nucleus. [UniProt]

Images



ARG40818 anti-Phosducin antibody IHC-P image

Immunohistochemistry: Paraffin-embedded Rat retina stained with ARG40818 anti-Phosducin antibody at 1:200 dilution.