

## ARG40835 anti-Profilin 2 antibody

Package: 50 µg  
Store at: -20°C

### Summary

Product Description	Rabbit Polyclonal antibody recognizes Profilin 2
Tested Reactivity	Hu, Ms, Rat
Predict Reactivity	Chk
Tested Application	FACS, ICC/IF, IHC-P, WB
Host	Rabbit
Clonality	Polyclonal
Isotype	IgG
Target Name	Profilin 2
Species	Human
Immunogen	Synthetic peptide corresponding to aa. 125-140 of Human Profilin 2. (NKKAYSMAYLRDSGF)
Conjugation	Un-conjugated
Alternate Names	Profilin-2; D3S1319E; PFL; Profilin II

### Application Instructions

Application table	Application	Dilution
	FACS	1 - 3 µg/10 <sup>6</sup> cells
	ICC/IF	1:200 - 1:1000
	IHC-P	1:200 - 1:1000
	WB	1:500 - 1:2000
Application Note	IHC-P: Antigen Retrieval: Heat mediation was performed in Citrate buffer (pH 6.0) for 20 min. * The dilutions indicate recommended starting dilutions and the optimal dilutions or concentrations should be determined by the scientist.	

### Properties

Form	Liquid
Purification	Affinity purification with immunogen.
Buffer	0.2% Na <sub>2</sub> HPO <sub>4</sub> , 0.9% NaCl, 0.05% Thimerosal, 0.05% Sodium azide and 5% BSA.
Preservative	0.05% Thimerosal and 0.05% Sodium azide
Stabilizer	5% BSA
Concentration	0.5 mg/ml
Storage instruction	For continuous use, store undiluted antibody at 2-8°C for up to a week. For long-term storage, aliquot and store at -20°C or below. Storage in frost free freezers is not recommended. Avoid repeated

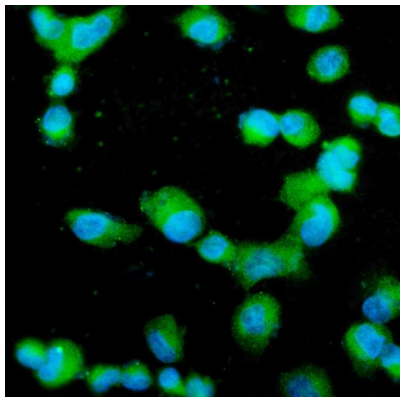
freeze/thaw cycles. Suggest spin the vial prior to opening. The antibody solution should be gently mixed before use.

**Note** For laboratory research only, not for drug, diagnostic or other use.

## Bioinformation

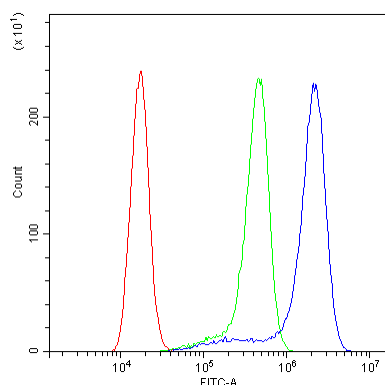
Gene Symbol	PFN2
Gene Full Name	profilin 2
Background	The protein encoded by this gene is a ubiquitous actin monomer-binding protein belonging to the profilin family. It is thought to regulate actin polymerization in response to extracellular signals. There are two alternatively spliced transcript variants encoding different isoforms described for this gene. [provided by RefSeq, Jul 2008]
Function	Binds to actin and affects the structure of the cytoskeleton. At high concentrations, profilin prevents the polymerization of actin, whereas it enhances it at low concentrations. By binding to PIP2, it inhibits the formation of IP3 and DG. [UniProt]
Calculated Mw	15 kDa
Cellular Localization	Cytoplasm, cytoskeleton. [UniProt]

## Images



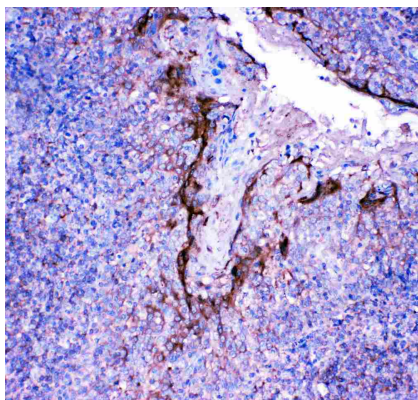
ARG40835 anti-Profilin 2 antibody ICC/IF image

Immunofluorescence: SH-SY5Y cells were blocked with 10% goat serum and then stained with ARG40835 anti-Profilin 2 antibody (green) at 5 µg/ml dilution, overnight at 4°C. DAPI (blue) for nuclear staining.



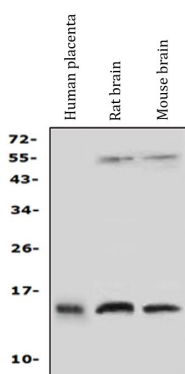
ARG40835 anti-Profilin 2 antibody FACS image

Flow Cytometry: A431 cells were blocked with 10% normal goat serum and stained with ARG40835 anti-Profilin 2 antibody (blue) at 1 µg/10<sup>6</sup> cells for 30 min at 20°C, followed by incubation with DyLight®488 labelled secondary antibody. Isotype control antibody (green) was Rabbit IgG (1 µg/10<sup>6</sup> cells) used under the same conditions. Unlabelled sample (red) was also used as a control.



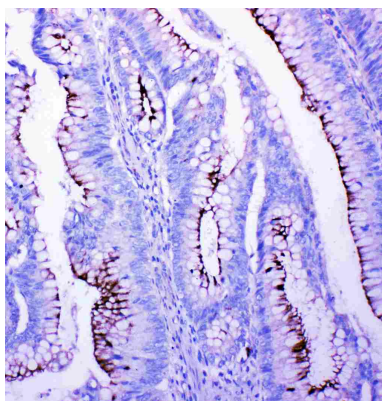
ARG40835 anti-Profilin 2 antibody IHC-P image

Immunohistochemistry: Paraffin-embedded Human tonsil tissue. Antigen Retrieval: Heat mediation was performed in Citrate buffer (pH 6.0, epitope retrieval solution) for 20 min. The tissue section was blocked with 10% goat serum. The tissue section was then stained with ARG40835 anti-Profilin 2 antibody at 1 µg/ml, overnight at 4°C.



ARG40835 anti-Profilin 2 antibody WB image

Western blot: 50 µg of samples under reducing conditions. Human placenta, Rat brain and Mouse brain lysates stained with ARG40835 anti-Profilin 2 antibody at 0.5 µg/ml, overnight at 4°C.



ARG40835 anti-Profilin 2 antibody IHC-P image

Immunohistochemistry: Paraffin-embedded Human intestinal cancer tissue. Antigen Retrieval: Heat mediation was performed in Citrate buffer (pH 6.0, epitope retrieval solution) for 20 min. The tissue section was blocked with 10% goat serum. The tissue section was then stained with ARG40835 anti-Profilin 2 antibody at 1 µg/ml, overnight at 4°C.