

## ARG40841 anti-Maspin antibody

Package: 50 µg  
Store at: -20°C

### Summary

Product Description	Rabbit Polyclonal antibody recognizes Maspin
Tested Reactivity	Hu, Ms, Rat
Tested Application	ICC/IF, IHC-P, WB
Host	Rabbit
Clonality	Polyclonal
Isotype	IgG
Target Name	Maspin
Species	Human
Immunogen	Recombinant protein corresponding to M1-A350 of Human Maspin.
Conjugation	Un-conjugated
Alternate Names	PI-5; PI5; Maspin; Serpin B5; maspin; Peptidase inhibitor 5

### Application Instructions

Application table	Application	Dilution
	ICC/IF	1:200 - 1:1000
	IHC-P	1:200 - 1:1000
	WB	1:500 - 1:2000
Application Note	* The dilutions indicate recommended starting dilutions and the optimal dilutions or concentrations should be determined by the scientist.	

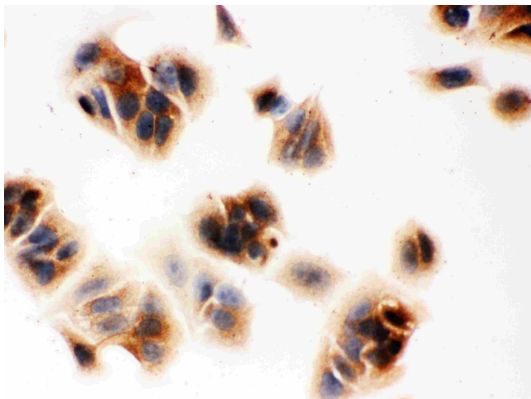
### Properties

Form	Liquid
Purification	Affinity purification with immunogen.
Buffer	0.2% Na <sub>2</sub> HPO <sub>4</sub> , 0.9% NaCl, 0.05% Sodium azide and 5% BSA.
Preservative	0.05% Sodium azide
Stabilizer	5% BSA
Concentration	0.5 mg/ml
Storage instruction	For continuous use, store undiluted antibody at 2-8°C for up to a week. For long-term storage, aliquot and store at -20°C or below. Storage in frost free freezers is not recommended. Avoid repeated freeze/thaw cycles. Suggest spin the vial prior to opening. The antibody solution should be gently mixed before use.
Note	For laboratory research only, not for drug, diagnostic or other use.

Bioinformation

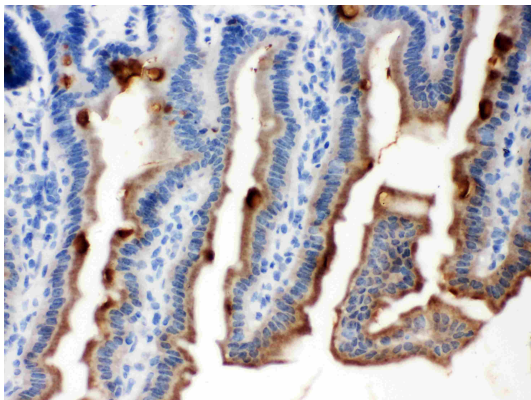
Gene Symbol	SERPINB5
Gene Full Name	serpin peptidase inhibitor, clade B (ovalbumin), member 5
Function	Tumor suppressor. It blocks the growth, invasion, and metastatic properties of mammary tumors. As it does not undergo the S (stressed) to R (relaxed) conformational transition characteristic of active serpins, it exhibits no serine protease inhibitory activity. [UniProt]
Calculated Mw	42 kDa
Cellular Localization	Secreted, extracellular space. [UniProt]

Images



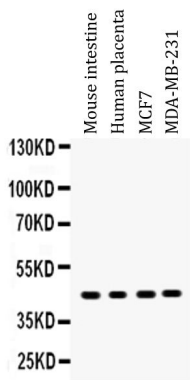
ARG40841 anti-Maspin antibody ICC image

Immunocytochemistry: MCF7 cells stained with ARG40841 anti-Maspin antibody.



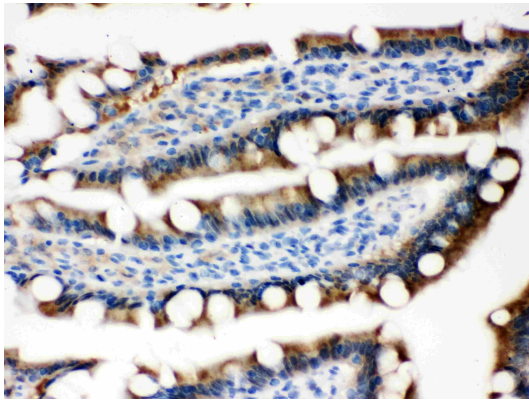
ARG40841 anti-Maspin antibody IHC-P image

Immunohistochemistry: Paraffin-embedded mouse intestine tissue stained with ARG40841 anti-Maspin antibody.



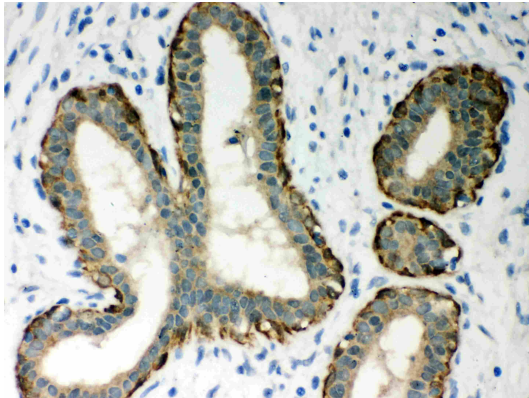
ARG40841 anti-Maspin antibody WB image

Western blot: 50 µg of Mouse intestine, 50 µg of Human placenta, 40 µg of MCF7 and 40 µg of MDA-MB-231 cell lysates stained with ARG40841 anti-Maspin antibody at 0.5 µg/ml dilution.



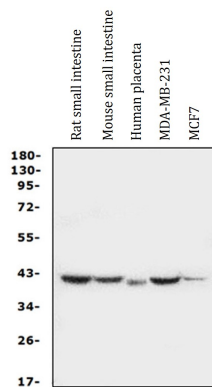
ARG40841 anti-Maspin antibody IHC-P image

Immunohistochemistry: Paraffin-embedded Rat intestine tissue stained with ARG40841 anti-Maspin antibody.



ARG40841 anti-Maspin antibody IHC-P image

Immunohistochemistry: Paraffin-embedded Human mammary cancer tissue stained with ARG40841 anti-Maspin antibody.



ARG40841 anti-Maspin antibody WB image

Western blot: 50  $\mu$ g of samples under reducing conditions. Rat small intestine, Mouse small intestine, Human placenta, MDA-MB-231 and MCF7 whole cell lysates stained with ARG40841 anti-Maspin antibody at 0.5  $\mu$ g/ml, overnight at 4°C.