

ARG40858 anti-C Reactive Protein antibody

Package: 100 µl
Store at: -20°C

Summary

Product Description	Mouse Monoclonal antibody recognizes C Reactive Protein
Tested Reactivity	Hu
Tested Application	FACS, IHC-P, WB
Host	Mouse
Clonality	Monoclonal
Isotype	IgG1
Target Name	C Reactive Protein
Species	Human
Immunogen	Purified recombinant fragment of Human C Reactive Protein.
Conjugation	Un-conjugated
Alternate Names	1-205; PTX1; C-reactive protein

Application Instructions

Application table	Application	Dilution
	FACS	1:200 - 1:400
	IHC-P	1:200 - 1:1000
	WB	1:500 - 1:2000
Application Note	* The dilutions indicate recommended starting dilutions and the optimal dilutions or concentrations should be determined by the scientist.	

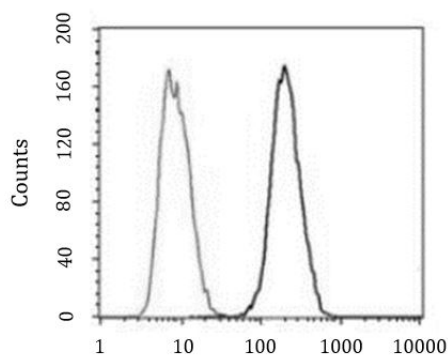
Properties

Form	Liquid
Purification	Unpurified
Buffer	Ascitic fluid and 0.03% Sodium azide.
Preservative	0.03% Sodium azide
Storage instruction	For continuous use, store undiluted antibody at 2-8°C for up to a week. For long-term storage, aliquot and store at -20°C or below. Storage in frost free freezers is not recommended. Avoid repeated freeze/thaw cycles. Suggest spin the vial prior to opening. The antibody solution should be gently mixed before use.
Note	For laboratory research only, not for drug, diagnostic or other use.

Bioinformation

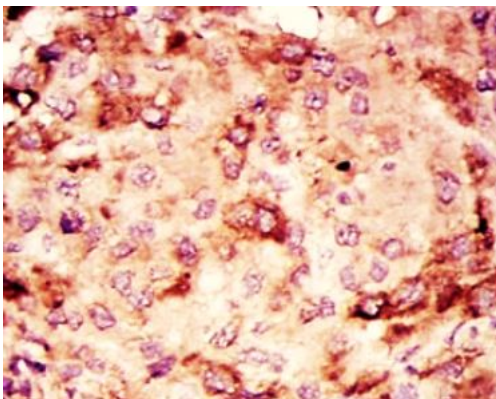
Gene Symbol	CRP
Gene Full Name	C-reactive protein, pentraxin-related
Background	The protein encoded by this gene belongs to the pentaxin family. It is involved in several host defense related functions based on its ability to recognize foreign pathogens and damaged cells of the host and to initiate their elimination by interacting with humoral and cellular effector systems in the blood. Consequently, the level of this protein in plasma increases greatly during acute phase response to tissue injury, infection, or other inflammatory stimuli. [provided by RefSeq, Sep 2009]
Function	Displays several functions associated with host defense: it promotes agglutination, bacterial capsular swelling, phagocytosis and complement fixation through its calcium-dependent binding to phosphorylcholine. Can interact with DNA and histones and may scavenge nuclear material released from damaged circulating cells. [UniProt]
Calculated Mw	25 kDa
Cellular Localization	Secreted. [UniProt]

Images



ARG40858 anti-C Reactive Protein antibody FACS image

Flow Cytometry: MCF7 cells stained with ARG40858 anti-C Reactive Protein antibody (right histogram) or negative control (left histogram).



ARG40858 anti-C Reactive Protein antibody IHC-P image

Immunohistochemistry: Paraffin-embedded Human liver cancer tissue stained with ARG40858 anti-C Reactive Protein antibody.

ARG40858 anti-C Reactive Protein antibody WB image

Western blot: Human CRP recombinant protein stained with ARG40858 anti-C Reactive Protein antibody.

