

ARG40953 anti-LMX1B antibody

Package: 100 µl
Store at: -20°C

Summary

Product Description	Rabbit Polyclonal antibody recognizes LMX1B
Tested Reactivity	Hu, Ms, Rat
Tested Application	WB
Host	Rabbit
Clonality	Polyclonal
Isotype	IgG
Target Name	LMX1B
Species	Human
Immunogen	Synthetic peptide within aa. 1-100 of Human LMX1B (NP_001167618.1).
Conjugation	Un-conjugated
Alternate Names	NPS1; LMX1.2; LIM/homeobox protein 1.2; LIM homeobox transcription factor 1-beta; LIM/homeobox protein LMX1B; LMX-1.2

Application Instructions

Application table	Application	Dilution
	WB	1:500 - 1:2000
Application Note	* The dilutions indicate recommended starting dilutions and the optimal dilutions or concentrations should be determined by the scientist.	
Observed Size	50 kDa	

Properties

Form	Liquid
Purification	Affinity purified.
Buffer	PBS (pH 7.3), 0.02% Sodium azide and 50% Glycerol.
Preservative	0.02% Sodium azide
Stabilizer	50% Glycerol
Storage instruction	For continuous use, store undiluted antibody at 2-8°C for up to a week. For long-term storage, aliquot and store at -20°C. Storage in frost free freezers is not recommended. Avoid repeated freeze/thaw cycles. Suggest spin the vial prior to opening. The antibody solution should be gently mixed before use.
Note	For laboratory research only, not for drug, diagnostic or other use.

Bioinformation

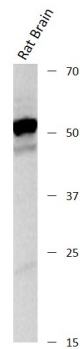
Gene Symbol	LMX1B
Gene Full Name	LIM homeobox transcription factor 1, beta
Background	This gene encodes a member of LIM-homeodomain family of proteins containing two N-terminal zinc-binding LIM domains, 1 homeodomain, and a C-terminal glutamine-rich domain. It functions as a transcription factor, and is essential for the normal development of dorsal limb structures, the glomerular basement membrane, the anterior segment of the eye, and dopaminergic and serotonergic neurons. Mutations in this gene are associated with nail-patella syndrome. Alternatively spliced transcript variants encoding different isoforms have been found for this gene. [provided by RefSeq, Mar 2010]
Function	Essential for the specification of dorsal limb fate at both the zeugopodal and autopodal levels. [UniProt]
Calculated Mw	45 kDa
Cellular Localization	Nucleus. [UniProt]

Images



ARG40953 anti-LMX1B antibody WB image

Western blot: MCF7 stained with ARG40953 anti-LMX1B antibody at 1:1000 dilution.



ARG40953 anti-LMX1B antibody WB image

Western blot: Rat Brain stained with ARG40953 anti-LMX1B antibody at 1:1000 dilution.

ARG40953 anti-LMX1B antibody WB image

Western blot: Mouse Brain stained with ARG40953 anti-LMX1B antibody at 1:1000 dilution.

