

ARG40975 anti-Thymidine Kinase antibody

Package: 100 µl
Store at: -20°C

Summary

Product Description	Rabbit Polyclonal antibody recognizes Thymidine Kinase
Tested Reactivity	Hu
Tested Application	FACS, IHC-P, WB
Host	Rabbit
Clonality	Polyclonal
Isotype	IgG
Target Name	Thymidine Kinase
Species	Human
Immunogen	KLH-conjugated synthetic peptide between aa. 139-173 of Human Thymidine Kinase.
Conjugation	Un-conjugated
Alternate Names	Thymidine kinase, cytosolic; TK2; EC 2.7.1.21

Application Instructions

Application table	Application	Dilution
	FACS	1:25
	IHC-P	1:25
	WB	1:2000
Application Note	IHC-P: Antigen Retrieval: Heat mediation was performed in Citrate buffer (pH 6.0). * The dilutions indicate recommended starting dilutions and the optimal dilutions or concentrations should be determined by the scientist.	
Positive Control	U-2OS	
Observed Size	28 kDa	

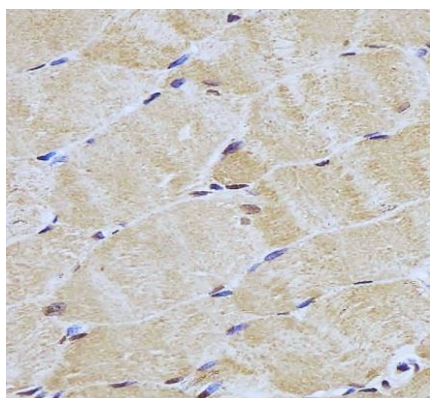
Properties

Form	Liquid
Purification	Purification with Protein A and immunogen peptide.
Buffer	PBS and 0.09% (W/V) Sodium azide.
Preservative	0.09% (W/V) Sodium azide.
Storage instruction	For continuous use, store undiluted antibody at 2-8°C for up to a week. For long-term storage, aliquot and store at -20°C or below. Storage in frost free freezers is not recommended. Avoid repeated freeze/thaw cycles. Suggest spin the vial prior to opening. The antibody solution should be gently mixed before use.

Bioinformation

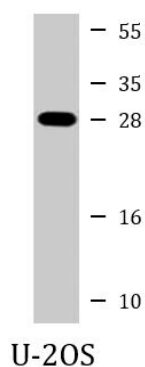
Gene Symbol	TK1
Gene Full Name	thymidine kinase 1, soluble
Calculated Mw	25 kDa
PTM	Phosphorylated on Ser-13 in mitosis. [UniProt]
Cellular Localization	Cytoplasm. [UniProt]

Images



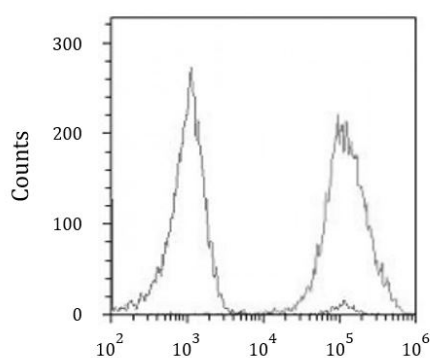
ARG40975 anti-Thymidine Kinase antibody IHC-P image

Immunohistochemistry: Paraformaldehyde-fixed and paraffin-embedded Human skeletal muscle tissue. Tissue was blocked with 3% BSA for 0.5 hour at room temperature. Antigen Retrieval: Heat mediation was performed in Citrate buffer (pH 6.0). Samples were stained with ARG40975 anti-Thymidine Kinase antibody at 1:25 dilution for 1 hours at 37°C.



ARG40975 anti-Thymidine Kinase antibody WB image

Western blot: 20 µg of U-2OS cell lysate stained with ARG40975 anti-Thymidine Kinase antibody at 1:2000 dilution.



ARG40975 anti-Thymidine Kinase antibody FACS image

Flow Cytometry: U2OS cells were fixed with 2% paraformaldehyde (10 min) and then permeabilized with 90% methanol for 10 min. The cells were then incubated in 2% bovine serum albumin to block non-specific protein-protein interactions followed by ARG40975 anti-Thymidine Kinase antibody (right histogram) at 1:25 dilution for 60 min at 37°C, followed by incubation with DyLight®488 labelled secondary antibody. Isotype control antibody (left histogram) was Rabbit IgG1 (1 µg/10⁶ cells) used under the same conditions. Acquisition of > 10000 events was performed.