

ARG41015 anti-RPL23A antibody

Package: 100 µl
Store at: -20°C

Summary

Product Description	Rabbit Polyclonal antibody recognizes RPL23A
Tested Reactivity	Hu, Ms, Rat
Tested Application	ICC/IF, IHC-P, WB
Host	Rabbit
Clonality	Polyclonal
Isotype	IgG
Target Name	RPL23A
Species	Human
Immunogen	Recombinant fusion protein corresponding to aa. 1-156 of Human RPL23A (NP_000975.2).
Conjugation	Un-conjugated
Alternate Names	60S ribosomal protein L23a; MDA20; L23A

Application Instructions

Application table	Application	Dilution
	ICC/IF	1:50 - 1:200
	IHC-P	1:50 - 1:200
	WB	1:500 - 1:2000
Application Note	* The dilutions indicate recommended starting dilutions and the optimal dilutions or concentrations should be determined by the scientist.	
Positive Control	HeLa	
Observed Size	20 kDa	

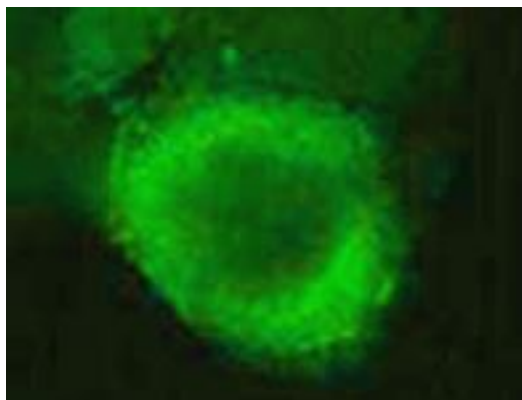
Properties

Form	Liquid
Purification	Affinity purified.
Buffer	PBS (pH 7.3), 0.02% Sodium azide and 50% Glycerol.
Preservative	0.02% Sodium azide
Stabilizer	50% Glycerol
Storage instruction	For continuous use, store undiluted antibody at 2-8°C for up to a week. For long-term storage, aliquot and store at -20°C. Storage in frost free freezers is not recommended. Avoid repeated freeze/thaw cycles. Suggest spin the vial prior to opening. The antibody solution should be gently mixed before use.

Bioinformation

Gene Symbol	RPL23A
Gene Full Name	ribosomal protein L23a
Background	Ribosomes, the organelles that catalyze protein synthesis, consist of a small 40S subunit and a large 60S subunit. Together these subunits are composed of 4 RNA species and approximately 80 structurally distinct proteins. This gene encodes a ribosomal protein that is a component of the 60S subunit. The protein belongs to the L23P family of ribosomal proteins. It is located in the cytoplasm. The protein may be one of the target molecules involved in mediating growth inhibition by interferon. In yeast, the corresponding protein binds to a specific site on the 26S rRNA. This gene is co-transcribed with the U42A, U42B, U101A, and U101B small nucleolar RNA genes, which are located in its third, first, second, and fourth introns, respectively. As is typical for genes encoding ribosomal proteins, there are multiple processed pseudogenes of this gene dispersed through the genome. [provided by RefSeq, Jul 2008]
Function	This protein binds to a specific region on the 26S rRNA. [UniProt]
Calculated Mw	18 kDa
PTM	N-terminus is methylated by METTL11A/NTM1. Citrullinated by PADI4. [UniProt]

Images



ARG41015 anti-RPL23A antibody ICC/IF image

Immunofluorescence: A431 cells stained with ARG41015 anti-RPL23A antibody at 1:100 dilution.



ARG41015 anti-RPL23A antibody WB image

Western blot: 25 µg of HeLa cell lysate stained with ARG41015 anti-RPL23A antibody at 1:1000 dilution.