

## ARG41028 anti-BBOX1 antibody

Package: 100 µl  
Store at: -20°C

### Summary

Product Description	Rabbit Polyclonal antibody recognizes BBOX1
Tested Reactivity	Hu, Ms, Rat
Tested Application	ICC/IF, WB
Host	Rabbit
Clonality	Polyclonal
Isotype	IgG
Target Name	BBOX1
Species	Human
Immunogen	Recombinant fusion protein corresponding to aa. 1-180 of Human BBOX1 (NP_003977.1).
Conjugation	Un-conjugated
Alternate Names	gamma-BBH; EC 1.14.11.1; BBH; Gamma-butyrobetaine hydroxylase; Gamma-BBH; BBOX; G-BBH; Gamma-butyrobetaine dioxygenase; Gamma-butyrobetaine,2-oxoglutarate dioxygenase

### Application Instructions

Application table	Application	Dilution
	ICC/IF	1:50 - 1:200
	WB	1:500 - 1:2000
Application Note	* The dilutions indicate recommended starting dilutions and the optimal dilutions or concentrations should be determined by the scientist.	
Positive Control	U-251MG	
Observed Size	44 kDa	

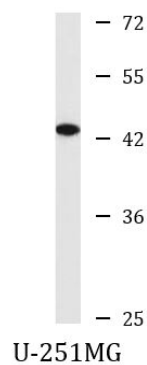
### Properties

Form	Liquid
Purification	Affinity purified.
Buffer	PBS (pH 7.3), 0.02% Sodium azide and 50% Glycerol.
Preservative	0.02% Sodium azide
Stabilizer	50% Glycerol
Storage instruction	For continuous use, store undiluted antibody at 2-8°C for up to a week. For long-term storage, aliquot and store at -20°C. Storage in frost free freezers is not recommended. Avoid repeated freeze/thaw cycles. Suggest spin the vial prior to opening. The antibody solution should be gently mixed before use.
Note	For laboratory research only, not for drug, diagnostic or other use.

## Bioinformation

Gene Symbol	BBOX1
Gene Full Name	butyrobetaine (gamma), 2-oxoglutarate dioxygenase (gamma-butyrobetaine hydroxylase) 1
Background	This gene encodes gamma butyrobetaine hydroxylase which catalyzes the formation of L-carnitine from gamma-butyrobetaine, the last step in the L-carnitine biosynthetic pathway. Carnitine is essential for the transport of activated fatty acids across the mitochondrial membrane during mitochondrial beta-oxidation. [provided by RefSeq, Jul 2008]
Function	Catalyzes the formation of L-carnitine from gamma-butyrobetaine. [UniProt]
Calculated Mw	45 kDa
Cellular Localization	Cytoplasm. [UniProt]

## Images



ARG41028 anti-BBOX1 antibody WB image

Western blot: 25 µg of U-251MG cell lysate stained with ARG41028 anti-BBOX1 antibody at 1:1000 dilution.