

## ARG41043 anti-FOXE1 / TTF2 antibody

Package: 100 µl  
Store at: -20°C

### Summary

Product Description	Rabbit Polyclonal antibody recognizes FOXE1 / TTF2
Tested Reactivity	Hu
Tested Application	ICC/IF, WB
Host	Rabbit
Clonality	Polyclonal
Isotype	IgG
Target Name	FOXE1 / TTF2
Species	Human
Immunogen	Recombinant fusion protein corresponding to aa. 1-270 of Human TTF2 (NP_003585.3).
Conjugation	Un-conjugated
Alternate Names	F2; ZGRF6; EC 3.6.4.-; Transcription release factor 2; RNA polymerase II termination factor; HuF2; Transcription termination factor 2; Lodestar homolog

### Application Instructions

Application table	Application	Dilution
	ICC/IF	1:50 - 1:200
	WB	1:500 - 1:2000
Application Note	* The dilutions indicate recommended starting dilutions and the optimal dilutions or concentrations should be determined by the scientist.	
Positive Control	SKOV3	
Observed Size	130 kDa	

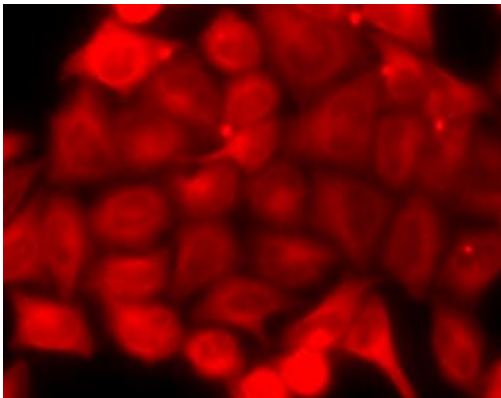
### Properties

Form	Liquid
Purification	Affinity purified.
Buffer	PBS (pH 7.3), 0.02% Sodium azide and 50% Glycerol.
Preservative	0.02% Sodium azide
Stabilizer	50% Glycerol
Storage instruction	For continuous use, store undiluted antibody at 2-8°C for up to a week. For long-term storage, aliquot and store at -20°C. Storage in frost free freezers is not recommended. Avoid repeated freeze/thaw cycles. Suggest spin the vial prior to opening. The antibody solution should be gently mixed before use.
Note	For laboratory research only, not for drug, diagnostic or other use.

Bioinformation

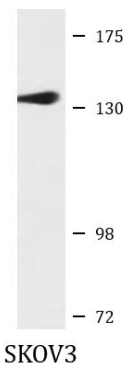
Gene Symbol	TTF2
Gene Full Name	transcription termination factor, RNA polymerase II
Background	This gene encodes a member of the SWI2/SNF2 family of proteins, which play a critical role in altering protein-DNA interactions. The encoded protein has been shown to have dsDNA-dependent ATPase activity and RNA polymerase II termination activity. This protein interacts with cell division cycle 5-like, associates with human splicing complexes, and plays a role in pre-mRNA splicing. [provided by RefSeq, Jul 2008]
Function	DsDNA-dependent ATPase which acts as a transcription termination factor by coupling ATP hydrolysis with removal of RNA polymerase II from the DNA template. May contribute to mitotic transcription repression. May also be involved in pre-mRNA splicing. [UniProt]
Calculated Mw	130 kDa
Cellular Localization	Cytoplasm. Nucleus. Note=Cytoplasmic during interphase. Relocates to the nucleus as cells enter mitosis. [UniProt]

Images



ARG41043 anti-FOX E1 / TTF2 antibody ICC/IF image

Immunofluorescence: A549 cells stained with ARG41043 anti-FOX E1 / TTF2 antibody.



ARG41043 anti-FOX E1 / TTF2 antibody WB image

Western blot: 25 µg of SKOV3 cell lysate stained with ARG41043 anti-FOX E1 / TTF2 antibody at 1:1000 dilution.