

## ARG41051 anti-MOGS / GCS1 antibody

Package: 100 µl  
Store at: -20°C

### Summary

Product Description	Rabbit Polyclonal antibody recognizes MOGS / GCS1
Tested Reactivity	Hu, Ms, Rat
Tested Application	WB
Host	Rabbit
Clonality	Polyclonal
Isotype	IgG
Target Name	MOGS / GCS1
Species	Human
Immunogen	Recombinant fusion protein corresponding to aa. 60-320 of Human MOGS (NP_006293.2).
Conjugation	Un-conjugated
Alternate Names	GCS1; DER7; Processing A-glucosidase I; CDG2B; CWH41; Mannosyl-oligosaccharide glucosidase; EC 3.2.1.106

### Application Instructions

Application table	Application	Dilution
	WB	1:500 - 1:2000
Application Note	* The dilutions indicate recommended starting dilutions and the optimal dilutions or concentrations should be determined by the scientist.	
Positive Control	BxPC-3	
Observed Size	80 kDa	

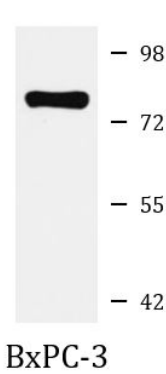
### Properties

Form	Liquid
Purification	Affinity purified.
Buffer	PBS (pH 7.3), 0.02% Sodium azide and 50% Glycerol.
Preservative	0.02% Sodium azide
Stabilizer	50% Glycerol
Storage instruction	For continuous use, store undiluted antibody at 2-8°C for up to a week. For long-term storage, aliquot and store at -20°C. Storage in frost free freezers is not recommended. Avoid repeated freeze/thaw cycles. Suggest spin the vial prior to opening. The antibody solution should be gently mixed before use.
Note	For laboratory research only, not for drug, diagnostic or other use.

Bioinformation

Gene Symbol	MOGS
Gene Full Name	mannosyl-oligosaccharide glucosidase
Background	This gene encodes the first enzyme in the N-linked oligosaccharide processing pathway. The enzyme cleaves the distal alpha-1,2-linked glucose residue from the Glc(3)-Man(9)-GlcNAc(2) oligosaccharide precursor. This protein is located in the lumen of the endoplasmic reticulum. Defects in this gene are a cause of type IIb congenital disorder of glycosylation (CDGIIb). Two transcript variants encoding different isoforms have been found for this gene. [provided by RefSeq, Mar 2009]
Function	Cleaves the distal alpha 1,2-linked glucose residue from the Glc(3)Man(9)GlcNAc(2) oligosaccharide precursor in a highly specific manner. [UniProt]
Calculated Mw	92 kDa
Cellular Localization	Endoplasmic reticulum membrane; Single-pass type II membrane protein. [UniProt]

Images



ARG41051 anti-MOGS / GCS1 antibody WB image

Western blot: 25 µg of BxPC-3 cell lysate stained with ARG41051 anti-MOGS / GCS1 antibody at 1:3000 dilution.