

ARG41148 anti-DLGAP1 / SAPAP1 / GKAP antibody

Package: 50 µg
Store at: -20°C

Summary

Product Description	Rabbit Polyclonal antibody recognizes DLGAP1 / SAPAP1 / GKAP
Tested Reactivity	Hu, Rat
Tested Application	ICC/IF, IHC-P, WB
Host	Rabbit
Clonality	Polyclonal
Isotype	IgG
Target Name	DLGAP1 / SAPAP1 / GKAP
Species	Human
Immunogen	An 18 amino acid peptide around the center region of Human SAPAP1.
Conjugation	Un-conjugated
Alternate Names	PSD-95/SAP90-binding protein 1; GKAP; Disks large-associated protein 1; DAP-1; DAP1; DAP-1-ALPHA; SAPAP1; SAP90/PSD-95-associated protein 1; DLGAP1A; DLGAP1B; hGKAP; DAP-1-BETA; Guanylate kinase-associated protein

Application Instructions

Application table	Application	Dilution
	ICC/IF	20 µg/ml
	IHC-P	5 µg/ml
	WB	0.5 - 1 µg/ml
Application Note	* The dilutions indicate recommended starting dilutions and the optimal dilutions or concentrations should be determined by the scientist.	
Observed Size	~ 110 kDa	

Properties

Form	Liquid
Purification	Affinity purification with immunogen.
Buffer	PBS and 0.02% Sodium azide.
Preservative	0.02% Sodium azide
Concentration	1 mg/ml
Storage instruction	For continuous use, store undiluted antibody at 2-8°C for up to a week. For long-term storage, aliquot and store at -20°C or below. Storage in frost free freezers is not recommended. Avoid repeated freeze/thaw cycles. Suggest spin the vial prior to opening. The antibody solution should be gently mixed before use.

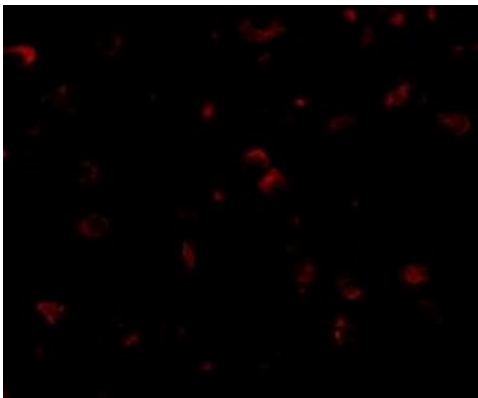
Note

For laboratory research only, not for drug, diagnostic or other use.

Bioinformation

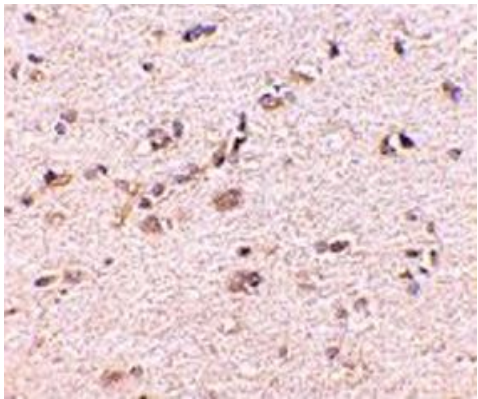
Gene Symbol	DLGAP1
Gene Full Name	discs, large (Drosophila) homolog-associated protein 1
Function	Part of the postsynaptic scaffold in neuronal cells. [UniProt]
Calculated Mw	109 kDa
Cellular Localization	Cell membrane; Peripheral membrane protein. Cell junction, synapse, postsynaptic cell membrane, postsynaptic density. Cell junction, synapse. [UniProt]

Images



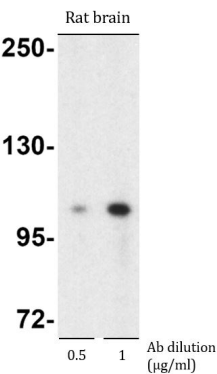
ARG41148 anti-DLGAP1 / SAPAP1 / GKAP antibody ICC/IF image

Immunofluorescence: Human brain cells stained with ARG41148 anti-DLGAP1 / SAPAP1 / GKAP antibody at 20 µg/ml dilution.



ARG41148 anti-DLGAP1 / SAPAP1 / GKAP antibody IHC-P image

Immunohistochemistry: Paraffin-embedded Human brain stained with ARG41148 anti-DLGAP1 / SAPAP1 / GKAP antibody at 5 µg/ml dilution.



ARG41148 anti-DLGAP1 / SAPAP1 / GKAP antibody WB image

Western blot: Rat brain lysate stained with ARG41148 anti-DLGAP1 / SAPAP1 / GKAP antibody at 0.5 and 1 µg/ml dilution.