

## ARG41196 anti-AP1M2 antibody

Package: 100 µl  
Store at: -20°C

### Summary

Product Description	Rabbit Polyclonal antibody recognizes AP1M2
Tested Reactivity	Hu, Ms, Rat
Tested Application	ICC/IF, WB
Host	Rabbit
Clonality	Polyclonal
Isotype	IgG
Target Name	AP1M2
Species	Human
Immunogen	Recombinant fusion protein corresponding to aa. 164-423 of Human AP1M2 (NP_005489.2).
Conjugation	Un-conjugated
Alternate Names	HSMU1B; Golgi adaptor HA1/AP1 adaptin mu-2 subunit; MU-1B; Mu-adaptin 2; AP-mu chain family member mu1B; mu2; Adaptor-related protein complex 1 subunit mu-2; Clathrin assembly protein complex 1 mu-2 medium chain 2; MU1B; Mu1B-adaptin; AP-1 complex subunit mu-2; AP1-mu2; Adaptor protein complex AP-1 subunit mu-2

### Application Instructions

Application table	Application	Dilution
	ICC/IF	1:50 - 1:200
	WB	1:500 - 1:2000
Application Note	* The dilutions indicate recommended starting dilutions and the optimal dilutions or concentrations should be determined by the scientist.	
Positive Control	Mouse kidney	
Observed Size	48 kDa	

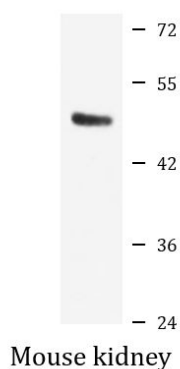
### Properties

Form	Liquid
Purification	Affinity purified.
Buffer	PBS (pH 7.3), 0.02% Sodium azide and 50% Glycerol.
Preservative	0.02% Sodium azide
Stabilizer	50% Glycerol
Storage instruction	For continuous use, store undiluted antibody at 2-8°C for up to a week. For long-term storage, aliquot and store at -20°C. Storage in frost free freezers is not recommended. Avoid repeated freeze/thaw cycles. Suggest spin the vial prior to opening. The antibody solution should be gently mixed before use.

## Bioinformation

Gene Symbol	AP1M2
Gene Full Name	adaptor-related protein complex 1, mu 2 subunit
Background	This gene encodes a subunit of the heterotetrameric adaptor-related protein complex 1 (AP-1), which belongs to the adaptor complexes medium subunits family. This protein is capable of interacting with tyrosine-based sorting signals. Alternative splicing results in multiple transcript variants. [provided by RefSeq, Jul 2014]
Function	Subunit of clathrin-associated adaptor protein complex 1 that plays a role in protein sorting in the trans-Golgi network (TGN) and endosomes. The AP complexes mediate the recruitment of clathrin to membranes and the recognition of sorting signals within the cytosolic tails of transmembrane cargo molecules. [UniProt]
Calculated Mw	48 kDa
PTM	Phosphorylation of membrane-bound AP1M1/AP1M2 increases its affinity for sorting signals. [UniProt]
Cellular Localization	Golgi apparatus. Cytoplasmic vesicle, clathrin-coated vesicle membrane; Peripheral membrane protein; Cytoplasmic side. Note=Component of the coat surrounding the cytoplasmic face of coated vesicles located at the Golgi complex. [UniProt]

## Images



ARG41196 anti-AP1M2 antibody WB image

Western blot: 25 µg of Mouse kidney lysate stained with ARG41196 anti-AP1M2 antibody at 1:1000 dilution.