

ARG41209 anti-LY86 / MD1 antibody

Package: 100 µl
Store at: -20°C

Summary

Product Description	Rabbit Polyclonal antibody recognizes LY86 / MD1
Tested Reactivity	Hu, Ms
Tested Application	IHC-P, WB
Host	Rabbit
Clonality	Polyclonal
Isotype	IgG
Target Name	LY86 / MD1
Species	Human
Immunogen	Recombinant fusion protein corresponding to aa. 21-162 of Human LY86 / MD1 (NP_004262.1).
Conjugation	Un-conjugated
Alternate Names	dJ80N2.1; Ly-86; Lymphocyte antigen 86; Protein MD-1; MD-1; MD1; MMD-1

Application Instructions

Application table	Application	Dilution
	IHC-P	1:50 - 1:200
	WB	1:500 - 1:2000
Application Note	* The dilutions indicate recommended starting dilutions and the optimal dilutions or concentrations should be determined by the scientist.	
Positive Control	Mouse stomach	
Observed Size	24 kDa	

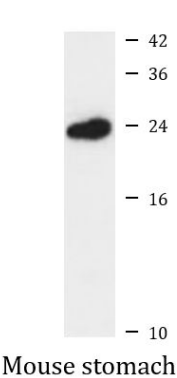
Properties

Form	Liquid
Purification	Affinity purified.
Buffer	PBS (pH 7.3), 0.02% Sodium azide and 50% Glycerol.
Preservative	0.02% Sodium azide
Stabilizer	50% Glycerol
Storage instruction	For continuous use, store undiluted antibody at 2-8°C for up to a week. For long-term storage, aliquot and store at -20°C. Storage in frost free freezers is not recommended. Avoid repeated freeze/thaw cycles. Suggest spin the vial prior to opening. The antibody solution should be gently mixed before use.
Note	For laboratory research only, not for drug, diagnostic or other use.

Bioinformation

Gene Symbol	LY86
Gene Full Name	lymphocyte antigen 86
Function	May cooperate with CD180 and TLR4 to mediate the innate immune response to bacterial lipopolysaccharide (LPS) and cytokine production. Important for efficient CD180 cell surface expression (By similarity). [UniProt]
Calculated Mw	18 kDa
Cellular Localization	Secreted, extracellular space. Note=Associated with CD180 at the cell surface. [UniProt]

Images



ARG41209 anti-LY86 / MD1 antibody WB image

Western blot: 25 µg of Mouse stomach lysate stained with ARG41209 anti-LY86 / MD1 antibody at 1:1000 dilution.