

## ARG41252 anti-BCAR1 / p130 Cas antibody [M144]

Package: 50 µl  
Store at: -20°C

### Summary

Product Description	Mouse Monoclonal antibody [M144] recognizes BCAR1 / p130 Cas
Tested Reactivity	Hu
Predict Reactivity	Ms, Rat, Chk
Tested Application	WB
Host	Mouse
Clonality	Monoclonal
Clone	M144
Isotype	IgG1
Target Name	BCAR1 / p130 Cas
Species	Rat
Immunogen	Recombinant protein around the C-terminus of Rat BCAR1 / p130 Cas. This sequence is highly conserved in Human, Mouse and Chicken.
Conjugation	Un-conjugated
Alternate Names	CASS1; CAS; p130cas; P130Cas; Cas scaffolding protein family member 1; Breast cancer anti-estrogen resistance protein 1; CAS1; CRK-associated substrate; CRKAS

### Application Instructions

Application table	Application	Dilution
	WB	1:1000
Application Note	WB: Antibody is suggested to be diluted in 5% skimmed milk/Tris buffer with 0.04% Tween20 and incubated for 1 hour at room temperature. * The dilutions indicate recommended starting dilutions and the optimal dilutions or concentrations should be determined by the scientist.	
Observed Size	~ 130 kDa	

### Properties

Form	Liquid
Purification	Purification with Protein A.
Buffer	PBS, 0.05% Sodium azide, 50% Glycerol and 1 mg/ml BSA.
Preservative	0.05% Sodium azide
Stabilizer	50% Glycerol and 1 mg/ml BSA
Storage instruction	For continuous use, store undiluted antibody at 2-8°C for up to a week. For long-term storage, aliquot and store at -20°C. Storage in frost free freezers is not recommended. Avoid repeated freeze/thaw

cycles. Suggest spin the vial prior to opening. The antibody solution should be gently mixed before use.

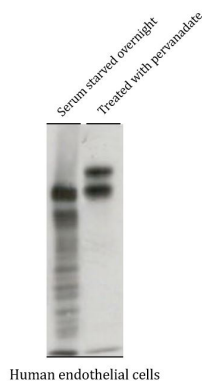
#### Note

For laboratory research only, not for drug, diagnostic or other use.

## Bioinformation

Gene Symbol	BCAR1
Gene Full Name	breast cancer anti-estrogen resistance 1
Background	BCAR1, or CAS, is an Src (MIM 190090) family kinase substrate involved in various cellular events, including migration, survival, transformation, and invasion (Sawada et al., 2006 [PubMed 17129785]).[supplied by OMIM, May 2009]
Function	Docking protein which plays a central coordinating role for tyrosine kinase-based signaling related to cell adhesion. Implicated in induction of cell migration. Overexpression confers antiestrogen resistance on breast cancer cells. [UniProt]
Calculated Mw	93 kDa
PTM	PTK2/FAK1 activation mediates phosphorylation at the YDYVHL motif; phosphorylation is most likely catalyzed by SRC family members. SRC-family kinases are recruited to the phosphorylated sites and can phosphorylate other tyrosine residues. Tyrosine phosphorylation is triggered by integrin-mediated adhesion of cells to the extracellular matrix.  Dephosphorylated by PTPN14 at Tyr-128. [UniProt]
Cellular Localization	Cell junction, focal adhesion. Cytoplasm. Note=Unphosphorylated form localizes in the cytoplasm and can move to the membrane upon tyrosine phosphorylation. [UniProt]

## Images



ARG41252 anti-BCAR1 / p130 Cas antibody [M144] WB image

Western blot: Human endothelial cells serum starved overnight (left) or treated with pervanadate (1 mM) for 30 minutes (right). The blots were stained with ARG41252 anti-BCAR1 / p130 Cas antibody [M144].