

ARG41293 anti-RGS7 antibody

Package: 100 µl
Store at: -20°C

Summary

Product Description	Rabbit Polyclonal antibody recognizes RGS7
Tested Reactivity	Hu
Tested Application	IHC-P, WB
Host	Rabbit
Clonality	Polyclonal
Isotype	IgG
Target Name	RGS7
Species	Human
Immunogen	KLH-conjugated synthetic peptide corresponding to aa. 440-469 of Human RGS7.
Conjugation	Un-conjugated
Alternate Names	RGS7; Regulator of G-protein signaling 7

Application Instructions

Application table	Application	Dilution
	IHC-P	1:10 - 1:50
	WB	1:1000
Application Note	* The dilutions indicate recommended starting dilutions and the optimal dilutions or concentrations should be determined by the scientist.	
Positive Control	K562	
Observed Size	53 kDa	

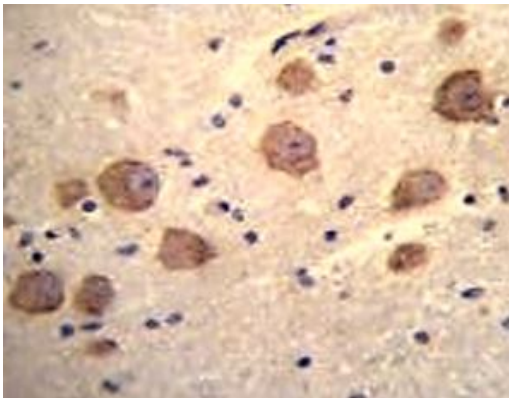
Properties

Form	Liquid
Purification	Purification with Protein A and immunogen peptide.
Buffer	PBS and 0.09% (W/V) Sodium azide.
Preservative	0.09% (W/V) Sodium azide.
Storage instruction	For continuous use, store undiluted antibody at 2-8°C for up to a week. For long-term storage, aliquot and store at -20°C or below. Storage in frost free freezers is not recommended. Avoid repeated freeze/thaw cycles. Suggest spin the vial prior to opening. The antibody solution should be gently mixed before use.
Note	For laboratory research only, not for drug, diagnostic or other use.

Bioinformation

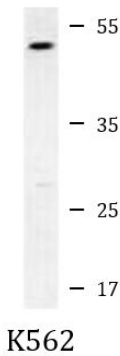
Gene Symbol	RGS7
Gene Full Name	regulator of G-protein signaling 7
Function	Inhibits signal transduction by increasing the GTPase activity of G protein alpha subunits thereby driving them into their inactive GDP-bound form. Activity on G(o)-alpha is specifically enhanced by the RGS6/GNG5 dimer. May play a role in synaptic vesicle exocytosis. May play important role in the rapid regulation of neuronal excitability and the cellular responses to short-lived stimulations (By similarity). [UniProt]
Calculated Mw	58 kDa
PTM	Palmitoylated. Ubiquitinated, leading to rapid proteasomal degradation. Phosphorylation and subsequent interaction with 14-3-3 proteins inhibits GAP activity. [UniProt]
Cellular Localization	Cytoplasm, cytosol. Cytoplasm. Cell membrane. Membrane; Peripheral membrane protein; Cytoplasmic side. Note=Interaction with PKD1 promotes location at the cell membrane (PubMed:10339594). Interaction with RGS7BP promotes location at the cell membrane (PubMed:15897264). [UniProt]

Images



ARG41293 anti-RGS7 antibody IHC-P image

Immunohistochemistry: Formalin-fixed and paraffin-embedded Human brain tissue stained with ARG41293 anti-RGS7 antibody.



ARG41293 anti-RGS7 antibody WB image

Western blot: 35 ug of K562 cell lysate stained with ARG41293 anti-RGS7 antibody.