

## ARG41295 anti-YARS2 antibody

Package: 100 µl  
Store at: -20°C

### Summary

Product Description	Rabbit Polyclonal antibody recognizes YARS2
Tested Reactivity	Hu
Predict Reactivity	Ms, Rat
Tested Application	IHC-P, WB
Host	Rabbit
Clonality	Polyclonal
Isotype	IgG
Target Name	YARS2
Species	Human
Immunogen	KLH-conjugated synthetic peptide corresponding to aa. 399-427 of Human YARS2.
Conjugation	Un-conjugated
Alternate Names	Tyrosyl-tRNA synthetase; CGI-04; Tyrosine--tRNA ligase, mitochondrial; EC 6.1.1.1; TyrRS; MT-TYRRS; TYRRS; MLASA2

### Application Instructions

Application table	Application	Dilution
	IHC-P	1:10 - 1:50
	WB	1:1000
Application Note	* The dilutions indicate recommended starting dilutions and the optimal dilutions or concentrations should be determined by the scientist.	
Positive Control	K562	
Observed Size	~ 50 kDa	

### Properties

Form	Liquid
Purification	This antibody is prepared by Saturated Ammonium Sulfate (SAS) precipitation followed by dialysis against PBS.
Buffer	PBS and 0.09% (W/V) Sodium azide.
Preservative	0.09% (W/V) Sodium azide.
Storage instruction	For continuous use, store undiluted antibody at 2-8°C for up to a week. For long-term storage, aliquot and store at -20°C or below. Storage in frost free freezers is not recommended. Avoid repeated freeze/thaw cycles. Suggest spin the vial prior to opening. The antibody solution should be gently mixed before use.

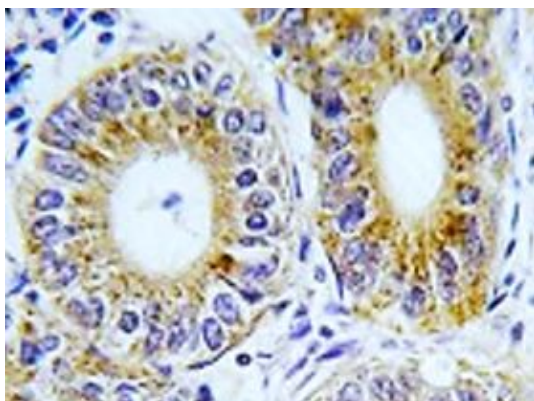
**Note**

For laboratory research only, not for drug, diagnostic or other use.

## Bioinformation

Gene Symbol	YARS2
Gene Full Name	tyrosyl-tRNA synthetase 2, mitochondrial
Background	This gene encodes a mitochondrial protein that catalyzes the attachment of tyrosine to tRNA(Tyr). Mutations in this gene are associated with myopathy with lactic acidosis and sideroblastic anemia type 2 (MLASA2). [provided by RefSeq, Jan 2011]
Function	Catalyzes the attachment of tyrosine to tRNA(Tyr) in a two-step reaction: tyrosine is first activated by ATP to form Tyr-AMP and then transferred to the acceptor end of tRNA(Tyr). [UniProt]
Calculated Mw	53 kDa
Cellular Localization	Mitochondrion matrix. [UniProt]

## Images



ARG41295 anti-YARS2 antibody IHC-P image

Immunohistochemistry: Formalin-fixed and paraffin-embedded Human colon carcinoma tissue stained with ARG41295 anti-YARS2 antibody.



ARG41295 anti-YARS2 antibody WB image

Western blot: 20 ug of K562 whole cell lysate stained with ARG41295 anti-YARS2 antibody at 1:1000 dilution.