

ARG41352 anti-Musashi 1 antibody

Package: 50 µg
Store at: -20°C

Summary

Product Description	Rabbit Polyclonal antibody recognizes Musashi 1
Tested Reactivity	Hu, Ms, Rat
Tested Application	IHC-P, WB
Host	Rabbit
Clonality	Polyclonal
Isotype	IgG
Target Name	Musashi 1
Species	Human
Immunogen	Synthetic peptide corresponding to aa. 21-54 of Human Musashi 1. (KMFIGGLSWQTTQEGLREYFGQFGEVKECLVMRD)
Conjugation	Un-conjugated
Alternate Names	Musashi-1; RNA-binding protein Musashi homolog 1

Application Instructions

Application table	Application	Dilution
	IHC-P	1:200 - 1:1000
	WB	1:500 - 1:2000
Application Note	IHC-P: Antigen Retrieval: Heat mediation was performed in Citrate buffer (pH 6.0, epitope retrieval solution) for 20 min. * The dilutions indicate recommended starting dilutions and the optimal dilutions or concentrations should be determined by the scientist.	
Observed Size	~ 39 kDa	

Properties

Form	Liquid
Purification	Affinity purification with immunogen.
Buffer	0.2% Na ₂ HPO ₄ , 0.9% NaCl, 0.05% Sodium azide and 5% BSA.
Preservative	0.05% Sodium azide
Stabilizer	5% BSA
Concentration	0.5 mg/ml
Storage instruction	For continuous use, store undiluted antibody at 2-8°C for up to a week. For long-term storage, aliquot and store at -20°C or below. Storage in frost free freezers is not recommended. Avoid repeated freeze/thaw cycles. Suggest spin the vial prior to opening. The antibody solution should be gently mixed

before use.

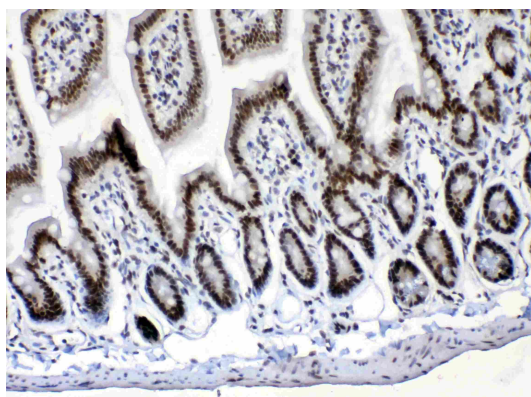
Note

For laboratory research only, not for drug, diagnostic or other use.

Bioinformation

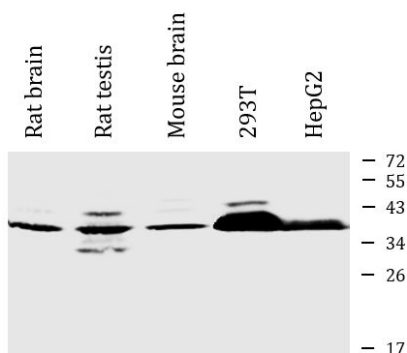
Gene Symbol	MSI1
Gene Full Name	musashi RNA-binding protein 1
Background	This gene encodes a protein containing two conserved tandem RNA recognition motifs. Similar proteins in other species function as RNA-binding proteins and play central roles in posttranscriptional gene regulation. Expression of this gene has been correlated with the grade of the malignancy and proliferative activity in gliomas and melanomas. A pseudogene for this gene is located on chromosome 11q13. [provided by RefSeq, Jul 2008]
Function	RNA binding protein that regulates the expression of target mRNAs at the translation level. Regulates expression of the NOTCH1 antagonist NUMB. Binds RNA containing the sequence 5'-GUUAGUUAGUUAGUU-3' and other sequences containing the pattern 5'-[GA]U(1-3)AGU-3'. May play a role in the proliferation and maintenance of stem cells in the central nervous system (By similarity). [UniProt]
Calculated Mw	39 kDa
Cellular Localization	Cytoplasm. Nucleus. [UniProt]

Images



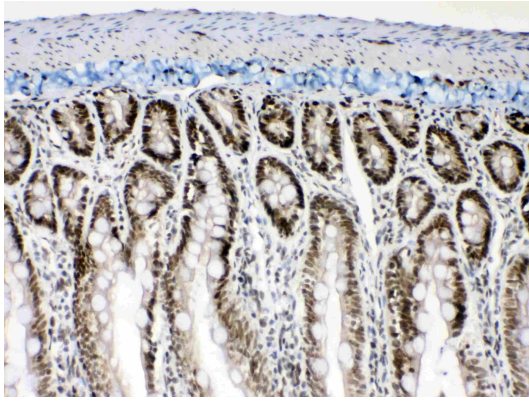
ARG41352 anti-Musashi 1 antibody IHC-P image

Immunohistochemistry: Paraffin-embedded Mouse intestine tissue. Antigen Retrieval: Heat mediation was performed in Citrate buffer (pH 6.0, epitope retrieval solution) for 20 min. The tissue section was blocked with 10% goat serum. The tissue section was then stained with ARG41352 anti-Musashi 1 antibody at 1 µg/ml dilution, overnight at 4°C.



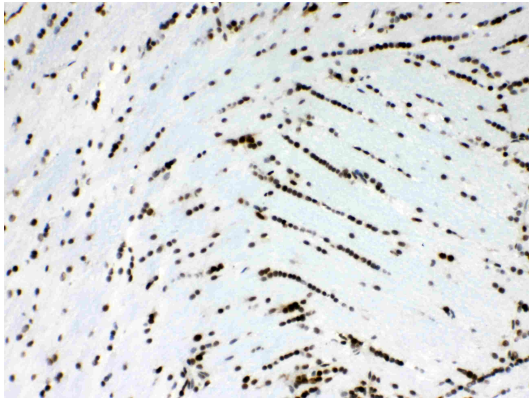
ARG41352 anti-Musashi 1 antibody WB image

Western blot: 50 µg of samples under reducing conditions. Rat brain, Rat testis, Mouse brain, 293T and HepG2 whole cell lysates stained with ARG41352 anti-Musashi 1 antibody at 0.5 µg/ml dilution, overnight at 4°C.



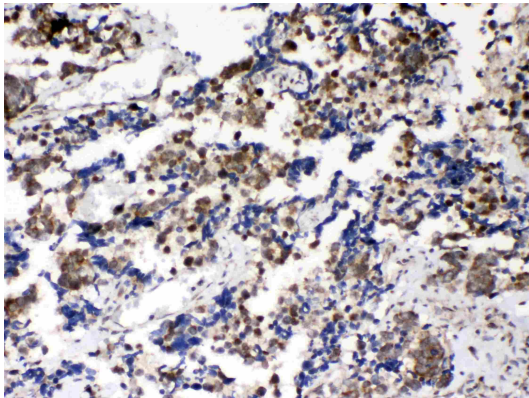
ARG41352 anti-Musashi 1 antibody IHC-P image

Immunohistochemistry: Paraffin-embedded Rat intestine tissue. Antigen Retrieval: Heat mediation was performed in Citrate buffer (pH 6.0, epitope retrieval solution) for 20 min. The tissue section was blocked with 10% goat serum. The tissue section was then stained with ARG41352 anti-Musashi 1 antibody at 1 μ g/ml dilution, overnight at 4°C.



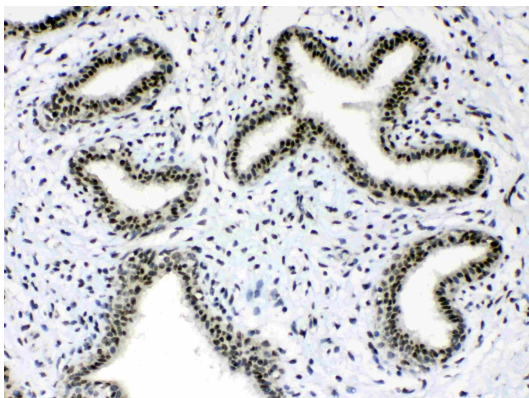
ARG41352 anti-Musashi 1 antibody IHC-P image

Immunohistochemistry: Paraffin-embedded Rat brain tissue. Antigen Retrieval: Heat mediation was performed in Citrate buffer (pH 6.0, epitope retrieval solution) for 20 min. The tissue section was blocked with 10% goat serum. The tissue section was then stained with ARG41352 anti-Musashi 1 antibody at 1 μ g/ml dilution, overnight at 4°C.



ARG41352 anti-Musashi 1 antibody IHC-P image

Immunohistochemistry: Paraffin-embedded Human lung cancer tissue. Antigen Retrieval: Heat mediation was performed in Citrate buffer (pH 6.0, epitope retrieval solution) for 20 min. The tissue section was blocked with 10% goat serum. The tissue section was then stained with ARG41352 anti-Musashi 1 antibody at 1 μ g/ml dilution, overnight at 4°C.



ARG41352 anti-Musashi 1 antibody IHC-P image

Immunohistochemistry: Paraffin-embedded Human mammary cancer tissues. Antigen Retrieval: Heat mediation was performed in Citrate buffer (pH 6.0, epitope retrieval solution) for 20 min. The tissue section was blocked with 10% goat serum. The tissue section was then stained with ARG41352 anti-Musashi 1 antibody at 1 μ g/ml dilution, overnight at 4°C.