

ARG41356 anti-RAB11B antibody

Package: 50 µg
Store at: -20°C

Summary

Product Description	Rabbit Polyclonal antibody recognizes RAB11B
Tested Reactivity	Hu, Ms, Rat
Tested Application	FACS, ICC/IF, IHC-P, WB
Host	Rabbit
Clonality	Polyclonal
Isotype	IgG
Target Name	RAB11B
Species	Human
Immunogen	Synthetic peptide corresponding to a sequence of Human RAB11B. (QKQIADRAAHDESPGNNVVDISVPPTDGGQKPNKLQCC)
Conjugation	Un-conjugated
Alternate Names	GTP-binding protein YPT3; H-YPT3; Ras-related protein Rab-11B

Application Instructions

Application table	Application	Dilution
	FACS	1 - 3 µg/10 ⁶ cells
	ICC/IF	1:200 - 1:1000
	IHC-P	1:200 - 1:1000
	WB	1:500 - 1:2000
Application Note	IHC-P: Antigen Retrieval: Heat mediation was performed in Citrate buffer (pH 6.0, epitope retrieval solution) for 20 min. * The dilutions indicate recommended starting dilutions and the optimal dilutions or concentrations should be determined by the scientist.	
Observed Size	~ 24 kDa	

Properties

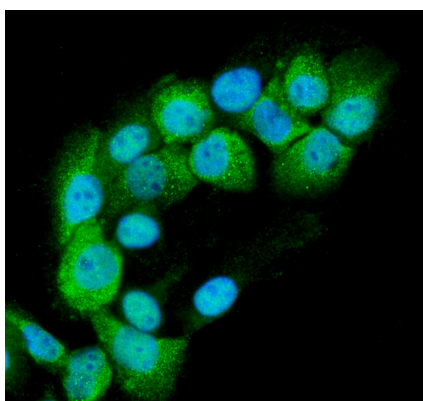
Form	Liquid
Purification	Affinity purification with immunogen.
Buffer	0.2% Na ₂ HPO ₄ , 0.9% NaCl, 0.05% Sodium azide and 4% Trehalose.
Preservative	0.05% Sodium azide
Stabilizer	4% Trehalose
Concentration	0.5 mg/ml

Storage instruction	For continuous use, store undiluted antibody at 2-8°C for up to a week. For long-term storage, aliquot and store at -20°C or below. Storage in frost free freezers is not recommended. Avoid repeated freeze/thaw cycles. Suggest spin the vial prior to opening. The antibody solution should be gently mixed before use.
Note	For laboratory research only, not for drug, diagnostic or other use.

Bioinformation

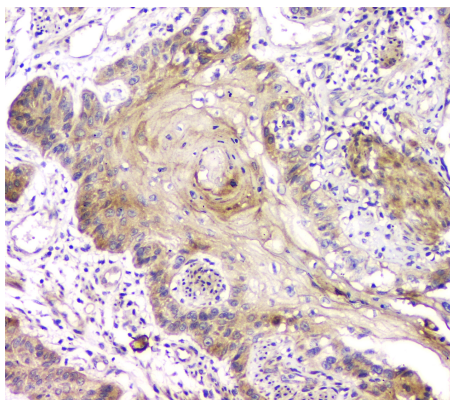
Gene Symbol	RAB11B
Gene Full Name	RAB11B, member RAS oncogene family
Background	The Ras superfamily of small GTP-binding proteins, which includes the Ras (see MIM 190020), Ral (see MIM 179550), Rho (see MIM 165390), Rap (see MIM 179520), and Rab (see MIM 179508) families, is involved in controlling a diverse set of essential cellular functions. The Rab family, including RAB11B, appears to play a critical role in regulating exocytotic and endocytotic pathways (summary by Zhu et al., 1994 [PubMed 7811277]).[supplied by OMIM, Nov 2010]
Function	The small GTPases Rab are key regulators of intracellular membrane trafficking, from the formation of transport vesicles to their fusion with membranes. Rabs cycle between an inactive GDP-bound form and an active GTP-bound form that is able to recruit to membranes different set of downstream effectors directly responsible for vesicle formation, movement, tethering and fusion. That Rab plays a role in endocytic recycling, regulating apical recycling of several transmembrane proteins including cystic fibrosis transmembrane conductance regulator/CFTR, epithelial sodium channel/ENaC, potassium voltage-gated channel, and voltage-dependent L-type calcium channel. May also regulate constitutive and regulated secretion, like insulin granule exocytosis. Required for melanosome transport and release from melanocytes. Also regulates V-ATPase intracellular transport in response to extracellular acidosis. [UniProt]
Calculated Mw	24 kDa
PTM	Citrullinated by PADI4. [UniProt]
Cellular Localization	Recycling endosome membrane; Lipid-anchor; Cytoplasmic side. Cytoplasmic vesicle, secretory vesicle, synaptic vesicle membrane; Lipid-anchor; Cytoplasmic side. Cytoplasmic vesicle, phagosome membrane; Lipid-anchor; Cytoplasmic side. Note=Recruited to phagosomes containing S.aureus. [UniProt]

Images



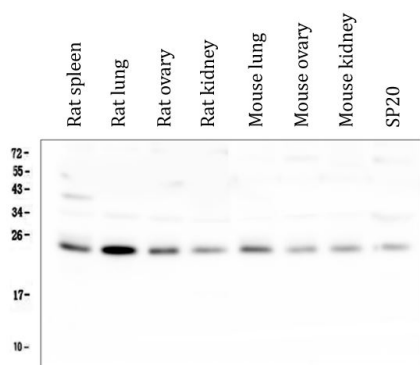
ARG41356 anti-RAB11B antibody ICC/IF image

Immunofluorescence: A431 cells stained with ARG41356 anti-RAB11B antibody. DAPI (blue) for nuclear staining.



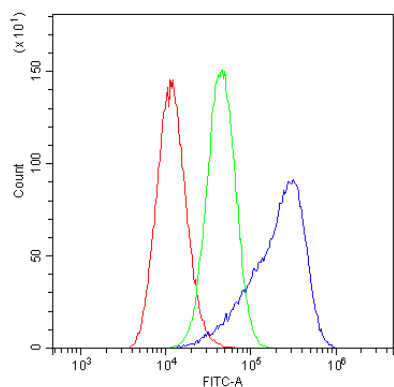
ARG41356 anti-RAB11B antibody IHC-P image

Immunohistochemistry: Paraffin-embedded Human oesophagus squama cancer tissue. Antigen Retrieval: Heat mediation was performed in Citrate buffer (pH 6.0, epitope retrieval solution) for 20 min. The tissue section was blocked with 10% goat serum. The tissue section was then stained with ARG41356 anti-RAB11B antibody at 1 $\mu\text{g}/\text{ml}$ dilution, overnight at 4°C.



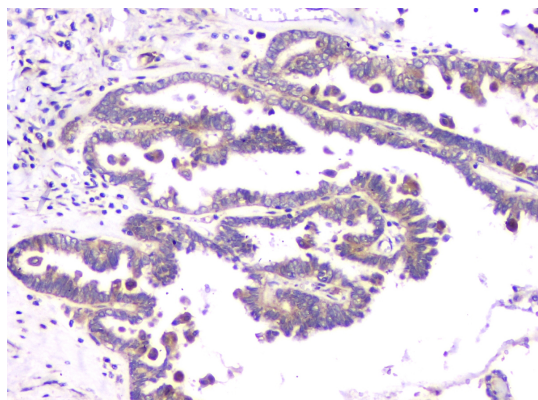
ARG41356 anti-RAB11B antibody WB image

Western blot: 50 μg of samples under reducing conditions. Rat spleen, Rat lung, Rat ovary, Rat kidney, Mouse lung, Mouse ovary, Mouse kidney and Mouse SP20 whole cell lysates stained with ARG41356 anti-RAB11B antibody at 0.5 $\mu\text{g}/\text{ml}$ dilution, overnight at 4°C.



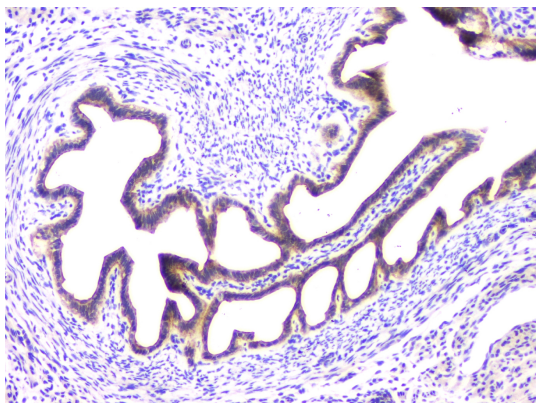
ARG41356 anti-RAB11B antibody FACS image

Flow Cytometry: A549 cells were blocked with 10% normal goat serum and then stained with ARG41356 anti-RAB11B antibody (blue) at 1 $\mu\text{g}/10^6$ cells for 30 min at 20°C, followed by incubation with DyLight®488 labelled secondary antibody. Isotype control antibody (green) was Rabbit IgG (1 $\mu\text{g}/10^6$ cells) used under the same conditions. Unlabelled sample (red) was also used as a control.



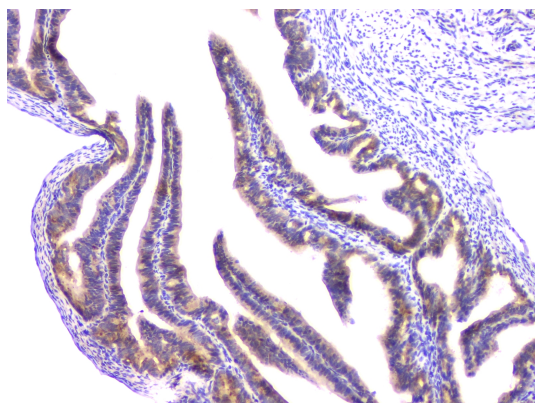
ARG41356 anti-RAB11B antibody IHC-P image

Immunohistochemistry: Paraffin-embedded Human ovary cancer tissue. Antigen Retrieval: Heat mediation was performed in Citrate buffer (pH 6.0, epitope retrieval solution) for 20 min. The tissue section was blocked with 10% goat serum. The tissue section was then stained with ARG41356 anti-RAB11B antibody at 1 $\mu\text{g}/\text{ml}$ dilution, overnight at 4°C.



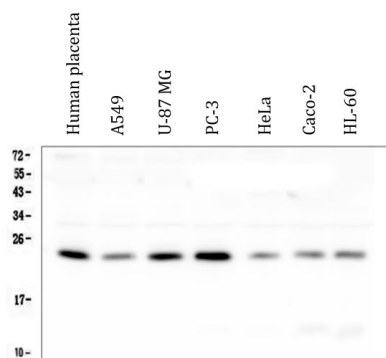
ARG41356 anti-RAB11B antibody IHC-P image

Immunohistochemistry: Paraffin-embedded Mouse ovary tissue. Antigen Retrieval: Heat mediation was performed in Citrate buffer (pH 6.0, epitope retrieval solution) for 20 min. The tissue section was blocked with 10% goat serum. The tissue section was then stained with ARG41356 anti-RAB11B antibody at 1 µg/ml dilution, overnight at 4°C.



ARG41356 anti-RAB11B antibody IHC-P image

Immunohistochemistry: Paraffin-embedded Rat ovary tissue. Antigen Retrieval: Heat mediation was performed in Citrate buffer (pH 6.0, epitope retrieval solution) for 20 min. The tissue section was blocked with 10% goat serum. The tissue section was then stained with ARG41356 anti-RAB11B antibody at 1 µg/ml dilution, overnight at 4°C.



ARG41356 anti-RAB11B antibody WB image

Western blot: 50 µg of samples under reducing conditions. Human placenta, A549, U-87 MG, PC-3, HeLa, Caco-2 and HL-60 whole cell lysates stained with ARG41356 anti-RAB11B antibody at 0.5 µg/ml dilution, overnight at 4°C.