

ARG41375 anti-Hsp 20 antibody

Package: 100 µl
Store at: -20°C

Summary

Product Description	Rabbit Polyclonal antibody recognizes Hsp 20
Tested Reactivity	Hu, Ms, Rat
Tested Application	FACS, IHC-P, WB
Host	Rabbit
Clonality	Polyclonal
Isotype	IgG
Target Name	Hsp 20
Species	Human
Immunogen	Synthetic peptide derived from Human Hsp 20.
Conjugation	Un-conjugated
Alternate Names	HspB6; PPP1R91; Heat shock protein beta-6; Hsp20; HEL55; Heat shock 20 kDa-like protein p20

Application Instructions

Application table	Application	Dilution
	FACS	1:50
	IHC-P	1:50 - 1:200
	WB	1:5000 - 1:10000
Application Note	* The dilutions indicate recommended starting dilutions and the optimal dilutions or concentrations should be determined by the scientist.	
Observed Size	18 kDa	

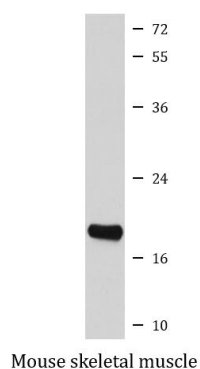
Properties

Form	Liquid
Purification	Affinity purified.
Buffer	PBS (pH 7.4), 150 mM NaCl, 0.02% Sodium azide and 50% Glycerol.
Preservative	0.02% Sodium azide
Stabilizer	50% Glycerol
Storage instruction	For continuous use, store undiluted antibody at 2-8°C for up to a week. For long-term storage, aliquot and store at -20°C. Storage in frost free freezers is not recommended. Avoid repeated freeze/thaw cycles. Suggest spin the vial prior to opening. The antibody solution should be gently mixed before use.
Note	For laboratory research only, not for drug, diagnostic or other use.

Bioinformation

Gene Symbol	HSPB6
Gene Full Name	heat shock protein, alpha-crystallin-related, B6
Background	This locus encodes a heat shock protein. The encoded protein likely plays a role in smooth muscle relaxation. [provided by RefSeq, Jan 2012]
Calculated Mw	17 kDa
PTM	The N-terminus is blocked. Phosphorylated at Ser-16 by PKA and probably PKD1K; required to protect cardiomyocytes from apoptosis. [UniProt]
Cellular Localization	Cytoplasm. Nucleus. Secreted. Note=Translocates to nuclear foci during heat shock. [UniProt]

Images



ARG41375 anti-Hsp 20 antibody WB image

Western blot: Mouse skeletal muscle lysate stained with ARG41375 anti-Hsp 20 antibody.