

ARG41409 anti-VLDL Receptor antibody [VLDLR/1337]

Package: 50 µg
Store at: -20°C

Summary

Product Description	Mouse Monoclonal antibody [VLDLR/1337] recognizes VLDL Receptor
Tested Reactivity	Hu
Tested Application	IHC-P
Host	Mouse
Clonality	Monoclonal
Clone	VLDLR/1337
Isotype	IgG1, kappa
Target Name	VLDL Receptor
Species	Human
Immunogen	Recombinant partial protein around the C-terminal region of Human VLDL Receptor.
Conjugation	Un-conjugated
Alternate Names	VLDLRCH; VLDL-R; VLDL receptor; CARMQ1; Very low-density lipoprotein receptor; CAMRQ1; CHRMQ1

Application Instructions

Application table	Application	Dilution
	IHC-P	1 - 2 µg/ml
Application Note	<p>IHC-P: Antigen Retrieval: Boil tissue section in 10 mM Tris with 1 mM EDTA (pH 9.0) for 10-20 min, followed by cooling at RT for 20 min.</p> <p>* The dilutions indicate recommended starting dilutions and the optimal dilutions or concentrations should be determined by the scientist.</p>	

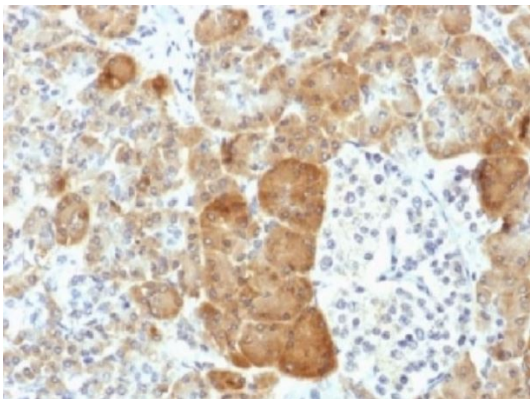
Properties

Form	Liquid
Purification	Purification with Protein G.
Buffer	PBS (pH 7.4), 0.05% Sodium azide and 0.1 mg/ml BSA.
Preservative	0.05% Sodium azide
Stabilizer	0.1 mg/ml BSA
Concentration	0.2 mg/ml
Storage instruction	For continuous use, store undiluted antibody at 2-8°C for up to a week. For long-term storage, aliquot and store at -20°C or below. Storage in frost free freezers is not recommended. Avoid repeated freeze/thaw cycles. Suggest spin the vial prior to opening. The antibody solution should be gently mixed before use.
Note	For laboratory research only, not for drug, diagnostic or other use.

Bioinformation

Gene Symbol	VLDLR
Gene Full Name	very low density lipoprotein receptor
Background	The low density lipoprotein receptor (LDLR) gene family consists of cell surface proteins involved in receptor-mediated endocytosis of specific ligands. This gene encodes a lipoprotein receptor that is a member of the LDLR family and plays important roles in VLDL-triglyceride metabolism and the reelin signaling pathway. Mutations in this gene cause VLDLR-associated cerebellar hypoplasia. Alternative splicing generates multiple transcript variants encoding distinct isoforms for this gene. [provided by RefSeq, Aug 2009]
Function	Binds VLDL and transports it into cells by endocytosis. In order to be internalized, the receptor-ligand complexes must first cluster into clathrin-coated pits. Binding to Reelin induces tyrosine phosphorylation of Dab1 and modulation of Tau phosphorylation (By similarity). [UniProt]
Calculated Mw	96 kDa
PTM	Ubiquitinated at Lys-839 by MYLIP leading to degradation. [UniProt]
Cellular Localization	Membrane; Single-pass type I membrane protein. Membrane, clathrin-coated pit; Single-pass type I membrane protein. [UniProt]

Images



ARG41409 anti-VLDL Receptor antibody [VLDLR/1337] IHC-P image

Immunohistochemistry: Formalin-fixed and paraffin-embedded Human pancreas tissue stained with ARG41409 anti-VLDL Receptor antibody [VLDLR/1337]. Antigen Retrieval: Boil tissue section in 10 mM Tris with 1 mM EDTA (pH 9.0) for 10-20 min, followed by cooling at RT for 20 min.