

ARG41479 anti-GABARAP antibody

Package: 100 µl
Store at: -20°C

Summary

Product Description	Rabbit Polyclonal antibody recognizes GABARAP
Tested Reactivity	Hu, Ms, Rat
Tested Application	IHC-P, WB
Host	Rabbit
Clonality	Polyclonal
Isotype	IgG
Target Name	GABARAP
Species	Human
Immunogen	Synthetic peptide within aa. 1-100 of Human GABARAP (NP_009209.1).
Conjugation	Un-conjugated
Alternate Names	A; MM46; GABARAP-a; Gamma-aminobutyric acid receptor-associated protein; ATG8A; GABA

Application Instructions

Application table	Application	Dilution
	IHC-P	1:50 - 1:200
	WB	1:500 - 1:2000
Application Note	* The dilutions indicate recommended starting dilutions and the optimal dilutions or concentrations should be determined by the scientist.	
Positive Control	HeLa	
Observed Size	15 kDa	

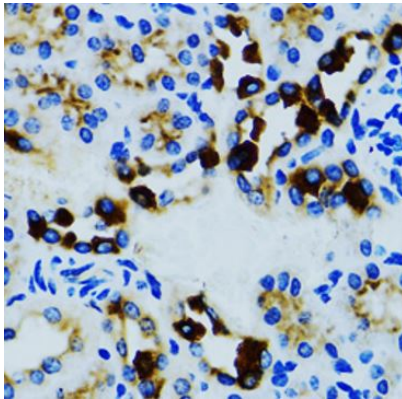
Properties

Form	Liquid
Purification	Affinity purified.
Buffer	PBS (pH 7.3), 0.02% Sodium azide and 50% Glycerol.
Preservative	0.02% Sodium azide
Stabilizer	50% Glycerol
Storage instruction	For continuous use, store undiluted antibody at 2-8°C for up to a week. For long-term storage, aliquot and store at -20°C. Storage in frost free freezers is not recommended. Avoid repeated freeze/thaw cycles. Suggest spin the vial prior to opening. The antibody solution should be gently mixed before use.
Note	For laboratory research only, not for drug, diagnostic or other use.

Bioinformation

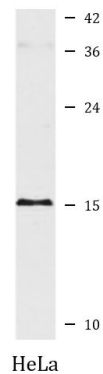
Gene Symbol	GABARAP
Gene Full Name	GABA(A) receptor-associated protein
Background	Gamma-aminobutyric acid A receptors [GABA(A) receptors] are ligand-gated chloride channels that mediate inhibitory neurotransmission. This gene encodes GABA(A) receptor-associated protein, which is highly positively charged in its N-terminus and shares sequence similarity with light chain-3 of microtubule-associated proteins 1A and 1B. This protein clusters neurotransmitter receptors by mediating interaction with the cytoskeleton. [provided by RefSeq, Jul 2008]
Function	Ubiquitin-like modifier that plays a role in intracellular transport of GABA(A) receptors and its interaction with the cytoskeleton. Involved in apoptosis. Involved in autophagy. Whereas LC3s are involved in elongation of the phagophore membrane, the GABARAP/GATE-16 subfamily is essential for a later stage in autophagosome maturation. [UniProt]
Calculated Mw	14 kDa
PTM	The precursor molecule is cleaved by ATG4B to form the cytosolic form, GABARAP-I. This is activated by APG7L/ATG7, transferred to ATG3 and conjugated to phospholipid to form the membrane-bound form, GABARAP-II. [UniProt]
Cellular Localization	Endomembrane system. Cytoplasm, cytoskeleton. Golgi apparatus membrane. Cytoplasmic vesicle, autophagosome. Cytoplasmic vesicle. Note=Largely associated with intracellular membrane structures including the Golgi apparatus and postsynaptic cisternae. Colocalizes with microtubules (By similarity). Localizes also to discrete punctae along the ciliary axoneme (By similarity). [UniProt]

Images



ARG41479 anti-GABARAP antibody IHC-P image

Immunohistochemistry: Paraffin-embedded Rat kidney tissue stained with ARG41479 anti-GABARAP antibody at 1:100 dilution.



ARG41479 anti-GABARAP antibody WB image

Western blot: 25 µg of HeLa cell lysate stained with ARG41479 anti-GABARAP antibody at 1:1000 dilution.