

## ARG41493 anti-IL6R alpha antibody

Package: 100 µl  
Store at: -20°C

### Summary

Product Description	Rabbit Polyclonal antibody recognizes IL6R alpha
Tested Reactivity	Hu, Ms, Rat
Tested Application	IHC-P, WB
Host	Rabbit
Clonality	Polyclonal
Isotype	IgG
Target Name	IL6R alpha
Species	Human
Immunogen	Recombinant fusion protein corresponding to aa. 20-320 of Human IL6R alpha (NP_000556.1).
Conjugation	Un-conjugated
Alternate Names	IL-6R-alpha; CD126; IL6RA; IL-6 receptor subunit alpha; IL-6R subunit alpha; IL6Q; CD antigen CD126; IL-6R 1; IL-6RA; gp80; IL6RQ; Interleukin-6 receptor subunit alpha; IL-6R-1; Membrane glycoprotein 80

### Application Instructions

Application table	Application	Dilution
	IHC-P	1:50 - 1:200
	WB	1:500 - 1:2000
Application Note	* The dilutions indicate recommended starting dilutions and the optimal dilutions or concentrations should be determined by the scientist.	
Positive Control	SW480	
Observed Size	~ 83 kDa	

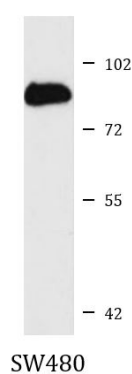
### Properties

Form	Liquid
Purification	Affinity purified.
Buffer	PBS (pH 7.3), 0.02% Sodium azide and 50% Glycerol.
Preservative	0.02% Sodium azide
Stabilizer	50% Glycerol
Storage instruction	For continuous use, store undiluted antibody at 2-8°C for up to a week. For long-term storage, aliquot and store at -20°C. Storage in frost free freezers is not recommended. Avoid repeated freeze/thaw cycles. Suggest spin the vial prior to opening. The antibody solution should be gently mixed before use.
Note	For laboratory research only, not for drug, diagnostic or other use.

## Bioinformation

Gene Symbol	IL6R
Gene Full Name	interleukin 6 receptor
Background	<p>This gene encodes a subunit of the interleukin 6 (IL6) receptor complex. Interleukin 6 is a potent pleiotropic cytokine that regulates cell growth and differentiation and plays an important role in the immune response. The IL6 receptor is a protein complex consisting of this protein and interleukin 6 signal transducer (IL6ST/GP130/IL6-beta), a receptor subunit also shared by many other cytokines. Dysregulated production of IL6 and this receptor are implicated in the pathogenesis of many diseases, such as multiple myeloma, autoimmune diseases and prostate cancer. Alternatively spliced transcript variants encoding distinct isoforms have been reported. A pseudogene of this gene is found on chromosome 9.[provided by RefSeq, May 2011]</p>
Function	<p>Part of the receptor for interleukin 6. Binds to IL6 with low affinity, but does not transduce a signal. Signal activation necessitate an association with IL6ST. Activation may lead to the regulation of the immune response, acute-phase reactions and hematopoiesis.</p> <p>Low concentration of a soluble form of IL6 receptor acts as an agonist of IL6 activity. [UniProt]</p>
Calculated Mw	52 kDa
PTM	A short soluble form may also be released from the membrane by proteolysis. [UniProt]
Cellular Localization	Basolateral cell membrane, Single-pass type I membrane protein, Secreted. [UniProt]

## Images



ARG41493 anti-IL6R alpha antibody WB image

Western blot: 25 µg of SW480 cell lysate stained with ARG41493 anti-IL6R alpha antibody at 1:1000 dilution.