

## ARG41624 anti-Caspase 2 antibody

Package: 100 µl  
Store at: -20°C

### Summary

Product Description	Rabbit Polyclonal antibody recognizes Caspase 2
Tested Reactivity	Hu, Ms, Rat
Tested Application	WB
Host	Rabbit
Clonality	Polyclonal
Isotype	IgG
Target Name	Caspase 2
Species	Human
Immunogen	Synthetic peptide of Human Caspase 2.
Conjugation	Un-conjugated
Alternate Names	Protease ICH-1; PPP1R57; NEDD-2; EC 3.4.22.55; NEDD2; Caspase-2; CASP-2; ICH1; Neural precursor cell expressed developmentally down-regulated protein 2

### Application Instructions

Application table	<table> <tr> <th>Application</th><th>Dilution</th></tr> <tr> <td>WB</td><td>1:500 - 1:1000</td></tr> </table>	Application	Dilution	WB	1:500 - 1:1000
Application	Dilution				
WB	1:500 - 1:1000				
Application Note	* The dilutions indicate recommended starting dilutions and the optimal dilutions or concentrations should be determined by the scientist.				
Positive Control	HeLa				
Observed Size	~ 48 kDa (uncleaved); ~ 32 kDa (cleaved)				

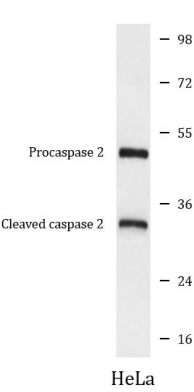
### Properties

Form	Liquid
Purification	Affinity purified.
Buffer	PBS (pH 7.4), 150 mM NaCl, 0.02% Sodium azide and 50% Glycerol.
Preservative	0.02% Sodium azide
Stabilizer	50% Glycerol
Storage instruction	For continuous use, store undiluted antibody at 2-8°C for up to a week. For long-term storage, aliquot and store at -20°C. Storage in frost free freezers is not recommended. Avoid repeated freeze/thaw cycles. Suggest spin the vial prior to opening. The antibody solution should be gently mixed before use.
Note	For laboratory research only, not for drug, diagnostic or other use.

Bioinformation

Gene Symbol	CASP2
Gene Full Name	caspase 2, apoptosis-related cysteine peptidase
Background	This gene encodes a member of the cysteine-aspartic acid protease (caspase) family. Caspases mediate cellular apoptosis through the proteolytic cleavage of specific protein substrates. The encoded protein may function in stress-induced cell death pathways, cell cycle maintenance, and the suppression of tumorigenesis. Increased expression of this gene may play a role in neurodegenerative disorders including Alzheimer's disease, Huntington's disease and temporal lobe epilepsy. Alternatively spliced transcript variants encoding multiple isoforms have been observed for this gene. [provided by RefSeq, Jan 2011]
Function	Involved in the activation cascade of caspases responsible for apoptosis execution. Might function by either activating some proteins required for cell death or inactivating proteins necessary for cell survival. [UniProt]
Calculated Mw	51 kDa (uncleaved)
PTM	The mature protease can process its own propeptide, but not that of other caspases. [UniProt]

Images



ARG41624 anti-Caspase 2 antibody WB image

Western blot: HeLa cell lysate stained with ARG41624 anti-Caspase 2 antibody.