

## ARG41640 anti-CD272 / BTLA antibody

Package: 50 µg  
Store at: -20°C

### Summary

Product Description	Rabbit Polyclonal antibody recognizes CD272 / BTLA
Tested Reactivity	Hu, Ms
Tested Application	FACS, IHC-P, WB
Host	Rabbit
Clonality	Polyclonal
Isotype	IgG
Target Name	CD272 / BTLA
Species	Human
Immunogen	Synthetic peptide corresponding to a sequence of Human CD272 / BTLA. (QSNLIESHSTTLYVTDVKASERPSKDEMASRPWLLYRL)
Conjugation	Un-conjugated
Alternate Names	CD antigen CD272; BTLA1; B- and T-lymphocyte-associated protein; B- and T-lymphocyte attenuator; CD272

### Application Instructions

Application table	Application	Dilution
	FACS	1:150 - 1:500
	IHC-P	1:200 - 1:1000
	WB	1:500 - 1:2000
Application Note	IHC-P: Antigen Retrieval: Heat mediation was performed in Citrate buffer (pH 6.0, epitope retrieval solution) for 20 min. * The dilutions indicate recommended starting dilutions and the optimal dilutions or concentrations should be determined by the scientist.	
Observed Size	~ 33 kDa (nonglycosylated); ~ 65 kDa (glycosylated)	

### Properties

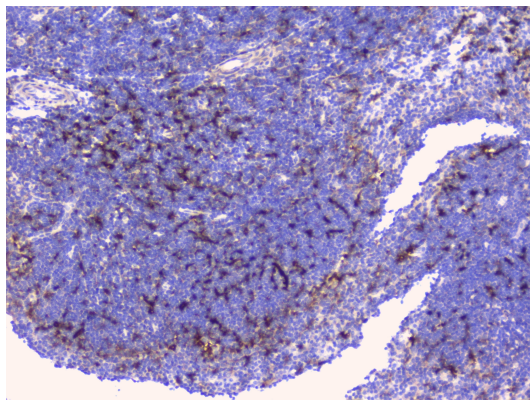
Form	Liquid
Purification	Affinity purification with immunogen.
Buffer	0.2% Na <sub>2</sub> HPO <sub>4</sub> , 0.9% NaCl, 0.05% Sodium azide and 4% Trehalose.
Preservative	0.05% Sodium azide
Stabilizer	4% Trehalose
Concentration	0.5 mg/ml

Storage instruction	For continuous use, store undiluted antibody at 2-8°C for up to a week. For long-term storage, aliquot and store at -20°C or below. Storage in frost free freezers is not recommended. Avoid repeated freeze/thaw cycles. Suggest spin the vial prior to opening. The antibody solution should be gently mixed before use.
Note	For laboratory research only, not for drug, diagnostic or other use.

## Bioinformation

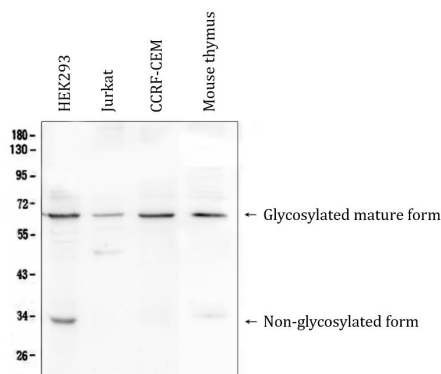
Gene Symbol	BTLA
Gene Full Name	B and T lymphocyte associated
Background	This gene encodes a member of the immunoglobulin superfamily. The encoded protein contains a single immunoglobulin (Ig) domain and is a receptor that relays inhibitory signals to suppress the immune response. Alternative splicing results in multiple transcript variants. Polymorphisms in this gene have been associated with an increased risk of rheumatoid arthritis. [provided by RefSeq, Aug 2011]
Function	Lymphocyte inhibitory receptor which inhibits lymphocytes during immune response. [UniProt]
Calculated Mw	33 kDa
PTM	Phosphorylated on Tyr residues by TNFRSF14 and by antigen receptors cross-linking, both inducing association with PTPN6 and PTPN11.  N-glycosylated. [UniProt]
Cellular Localization	Membrane; Single-pass type I membrane protein. [UniProt]

## Images



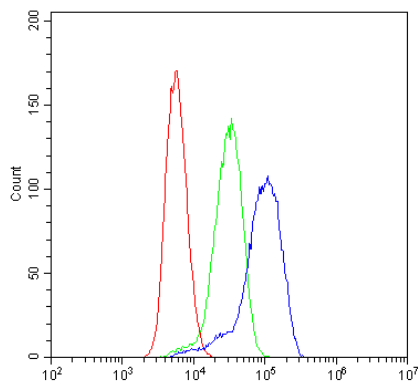
ARG41640 anti-CD272 / BTLA antibody IHC-P image

Immunohistochemistry: Paraffin-embedded Mouse spleen tissue. Antigen Retrieval: Heat mediation was performed in Citrate buffer (pH 6.0, epitope retrieval solution) for 20 min. The tissue section was blocked with 10% goat serum. The tissue section was then stained with ARG41640 anti-CD272 / BTLA antibody at 1 µg/ml dilution, overnight at 4°C.



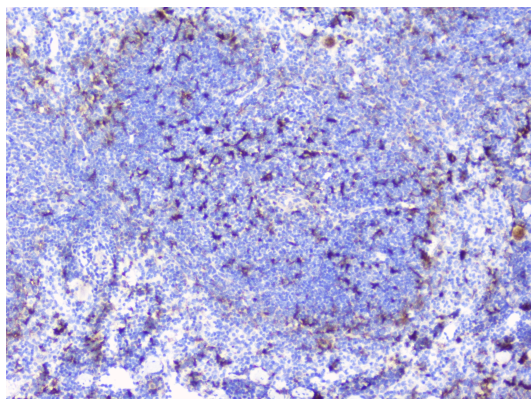
ARG41640 anti-CD272 / BTLA antibody WB image

Western blot: 50 µg of samples under reducing conditions. HEK293, Jurkat, CCRF-CEM and Mouse thymus lysates stained with ARG41640 anti-CD272 / BTLA antibody at 0.5 µg/ml dilution, overnight at 4°C.



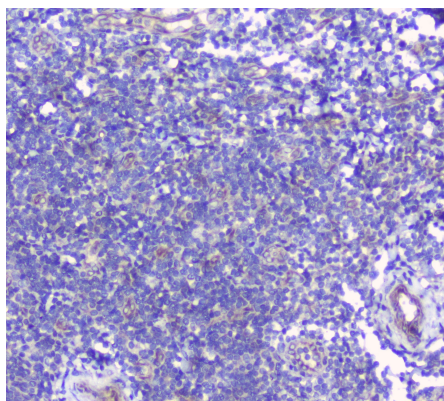
#### ARG41640 anti-CD272 / BTLA antibody FACS image

Flow Cytometry: THP-1 cells were blocked with 10% normal Goat serum and then stained with ARG41640 anti-CD272 / BTLA antibody (blue) at 1  $\mu\text{g}/10^6$  cells for 30 min at 20°C, followed by incubation with DyLight®488 labelled secondary antibody. Isotype control antibody (green) was Rabbit IgG (1  $\mu\text{g}/10^6$  cells) used under the same conditions. Unlabelled sample (red) was also used as a control.



#### ARG41640 anti-CD272 / BTLA antibody IHC-P image

Immunohistochemistry: Paraffin-embedded Mouse spleen tissue. Antigen Retrieval: Heat mediation was performed in Citrate buffer (pH 6.0, epitope retrieval solution) for 20 min. The tissue section was blocked with 10% goat serum. The tissue section was then stained with ARG41640 anti-CD272 / BTLA antibody at 1  $\mu\text{g}/\text{ml}$  dilution, overnight at 4°C.



#### ARG41640 anti-CD272 / BTLA antibody IHC-P image

Immunohistochemistry: Paraffin-embedded Human tonsil tissue. Antigen Retrieval: Heat mediation was performed in Citrate buffer (pH 6.0, epitope retrieval solution) for 20 min. The tissue section was blocked with 10% goat serum. The tissue section was then stained with ARG41640 anti-CD272 / BTLA antibody at 1  $\mu\text{g}/\text{ml}$  dilution, overnight at 4°C.