

ARG41683 anti-CLTC / Clathrin heavy chain antibody

Package: 100 µl
Store at: -20°C

Summary

Product Description	Rabbit Polyclonal antibody recognizes CLTC / Clathrin heavy chain
Tested Reactivity	Hu, Ms, Rat
Tested Application	ICC/IF, WB
Host	Rabbit
Clonality	Polyclonal
Isotype	IgG
Target Name	CLTC / Clathrin heavy chain
Species	Human
Immunogen	Recombinant fusion protein corresponding to aa. 1451-1675 of Human CLTC (NP_004850.1).
Conjugation	Un-conjugated
Alternate Names	CHC17; CHC; Clathrin heavy chain 1; Hc; CLH-17; CLTCL2; Clathrin heavy chain on chromosome 17

Application Instructions

Application table	Application	Dilution
	ICC/IF	1:50 - 1:200
	WB	1:500 - 1:2000
Application Note	* The dilutions indicate recommended starting dilutions and the optimal dilutions or concentrations should be determined by the scientist.	
Positive Control	HeLa	
Observed Size	~ 180 kDa	

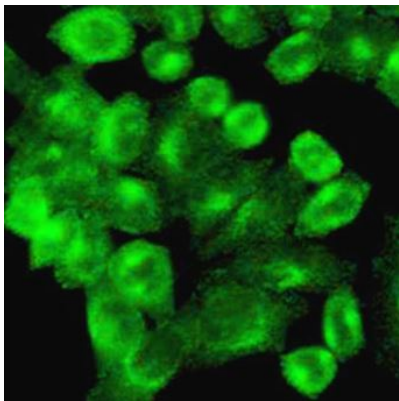
Properties

Form	Liquid
Purification	Affinity purified.
Buffer	PBS (pH 7.3), 0.02% Sodium azide and 50% Glycerol.
Preservative	0.02% Sodium azide
Stabilizer	50% Glycerol
Storage instruction	For continuous use, store undiluted antibody at 2-8°C for up to a week. For long-term storage, aliquot and store at -20°C. Storage in frost free freezers is not recommended. Avoid repeated freeze/thaw cycles. Suggest spin the vial prior to opening. The antibody solution should be gently mixed before use.
Note	For laboratory research only, not for drug, diagnostic or other use.

Bioinformation

Gene Symbol	CLTC
Gene Full Name	clathrin, heavy chain (Hc)
Background	Clathrin is a major protein component of the cytoplasmic face of intracellular organelles, called coated vesicles and coated pits. These specialized organelles are involved in the intracellular trafficking of receptors and endocytosis of a variety of macromolecules. The basic subunit of the clathrin coat is composed of three heavy chains and three light chains. [provided by RefSeq, Jul 2008]
Function	Clathrin is the major protein of the polyhedral coat of coated pits and vesicles. Two different adapter protein complexes link the clathrin lattice either to the plasma membrane or to the trans-Golgi network. [UniProt]
Research Area	Controls and Markers antibody; Signaling Transduction antibody; Endosome Marker antibody
Calculated Mw	192 kDa
Cellular Localization	Cytoplasmic vesicle membrane; Peripheral membrane protein; Cytoplasmic side. Membrane, coated pit; Peripheral membrane protein; Cytoplasmic side. Melanosome. Cytoplasm, cytoskeleton, spindle. Note=Cytoplasmic face of coated pits and vesicles. Identified by mass spectrometry in melanosome fractions from stage I to stage IV. In complex with TACC3 and CKAP5 (forming the TACC3/ch-TOG/clathrin complex) localized to inter-microtubule bridges in mitotic spindles. [UniProt]

Images



ARG41683 anti-CLTC / Clathrin heavy chain antibody ICC/IF image

Immunofluorescence: HeLa cells stained with ARG41683 anti-CLTC / Clathrin heavy chain antibody at 1:100 dilution.



ARG41683 anti-CLTC / Clathrin heavy chain antibody WB image

Western blot: 25 µg of HeLa cell lysate stained with ARG41683 anti-CLTC / Clathrin heavy chain antibody at 1:1000 dilution.