

ARG41697 anti-CEP85L antibody

Package: 50 µl
Store at: -20°C

Summary

Product Description	Rabbit Polyclonal antibody recognizes CEP85L
Tested Reactivity	Hu
Predict Reactivity	Ms, Cow, Dog, Hrs, Pig, Rb
Tested Application	WB
Host	Rabbit
Clonality	Polyclonal
Isotype	IgG
Target Name	CEP85L
Species	Human
Immunogen	Synthetic peptide around the N-terminal region of Human CEP85L. (within the following region: KAKALTSQLRTIGPSCLHDSMEMLRLEDKEINKKRSSTLDCKYKFESCSK)
Conjugation	Un-conjugated
Alternate Names	C6orf204; Serologically defined breast cancer antigen NY-BR-15; bA57K17.2; Centrosomal protein of 85 kDa-like; NY-BR-15

Application Instructions

Predict Reactivity Note	Predicted Homology Based On Immunogen Sequence: Cow: 92%; Dog: 100%; Horse: 92%; Mouse: 100%; Pig: 85%; Rabbit: 100%				
Application table	<table> <tr> <th>Application</th><th>Dilution</th></tr> <tr> <td>WB</td><td>1 µg/ml</td></tr> </table>	Application	Dilution	WB	1 µg/ml
Application	Dilution				
WB	1 µg/ml				
Application Note	* The dilutions indicate recommended starting dilutions and the optimal dilutions or concentrations should be determined by the scientist.				
Positive Control	Human fetal liver				
Observed Size	~ 92 kDa				

Properties

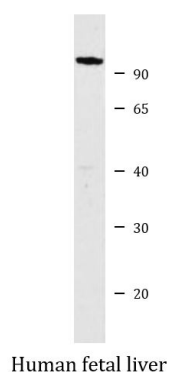
Form	Liquid
Purification	Affinity purified.
Buffer	PBS, 0.09% (w/v) Sodium azide and 2% Sucrose.
Preservative	0.09% (w/v) Sodium azide
Stabilizer	2% Sucrose
Concentration	Batch dependent: 0.5 - 1 mg/ml

Storage instruction	For continuous use, store undiluted antibody at 2-8°C for up to a week. For long-term storage, aliquot and store at -20°C or below. Storage in frost free freezers is not recommended. Avoid repeated freeze/thaw cycles. Suggest spin the vial prior to opening. The antibody solution should be gently mixed before use.
Note	For laboratory research only, not for drug, diagnostic or other use.

Bioinformation

Gene Symbol	CEP85L
Gene Full Name	centrosomal protein 85kDa-like
Background	The protein encoded by this gene was identified as a breast cancer antigen. Nothing more is known of its function at this time. Three transcript variants encoding different isoforms have been found for this gene. [provided by RefSeq, May 2010]
Calculated Mw	92 kDa
Cellular Localization	Cytoplasm, cytoskeleton, microtubule organizing center, centrosome. Note=Subcellular experiments using a GFP-tagged system produced a weak signal, rendering it difficult to confirm centrosome association. [UniProt]

Images



ARG41697 anti-CEP85L antibody WB image

Western blot: Human fetal liver lysate stained with ARG41697 anti-CEP85L antibody at 1 µg/ml dilution.