

ARG41721 anti-NEK7 antibody

Package: 50 µg
Store at: -20°C

Summary

Product Description	Goat Polyclonal antibody recognizes NEK7
Tested Reactivity	Hu
Predict Reactivity	Ms, Rat, Cow, Dog
Tested Application	IHC-P, WB
Host	Goat
Clonality	Polyclonal
Isotype	IgG
Target Name	NEK7
Species	Human
Immunogen	Synthetic peptide around the internal region of Human NEK7. (NP_598001.1) (C-NTLANFRIEKK)
Conjugation	Un-conjugated
Alternate Names	EC 2.7.11.1; Never in mitosis A-related kinase 7; Serine/threonine-protein kinase Nek7; NimA-related protein kinase 7

Application Instructions

Application table	Application	Dilution
	IHC-P	3 - 5 µg/ml
	WB	0.05 - 0.2 µg/ml
Application Note	WB: Recommend incubate at RT for 1h. IHC-P: Antigen Retrieval: Steam tissue section in Citrate buffer (pH 6.0). * The dilutions indicate recommended starting dilutions and the optimal dilutions or concentrations should be determined by the scientist.	
Observed Size	~ 35 kDa	

Properties

Form	Liquid
Purification	Affinity purified
Buffer	Tris saline (pH 7.3), 0.02% Sodium azide and 0.5% BSA.
Preservative	0.02% Sodium azide
Stabilizer	0.5% BSA
Concentration	0.5 mg/ml
Storage instruction	For continuous use, store undiluted antibody at 2-8°C for up to a week. For long-term storage, aliquot and store at -20°C or below. Storage in frost free freezers is not recommended. Avoid repeated

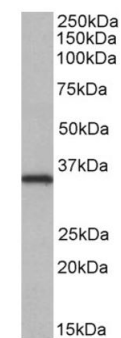
freeze/thaw cycles. Suggest spin the vial prior to opening. The antibody solution should be gently mixed before use.

Note For laboratory research only, not for drug, diagnostic or other use.

Bioinformation

Gene Symbol	NEK7
Gene Full Name	NIMA-related kinase 7
Background	NIMA-related kinases share high amino acid sequence identity with the gene product of the <i>Aspergillus nidulans</i> 'never in mitosis A' gene, which controls initiation of mitosis.[supplied by OMIM, Jul 2002]
Function	Protein kinase which plays an important role in mitotic cell cycle progression. Required for microtubule nucleation activity of the centrosome, robust mitotic spindle formation and cytokinesis. Phosphorylates RPS6KB1. [UniProt]
Calculated Mw	35 kDa
PTM	Phosphorylation at Ser-195 required for its activation. [UniProt]
Cellular Localization	Nucleus. Cytoplasm. Cytoplasm, cytoskeleton, spindle pole. Cytoplasm, cytoskeleton, microtubule organizing center, centrosome. Note=Present at centrosome throughout the cell cycle. Also detected at spindle midzone of the anaphase cells and eventually concentrates at the midbody. [UniProt]

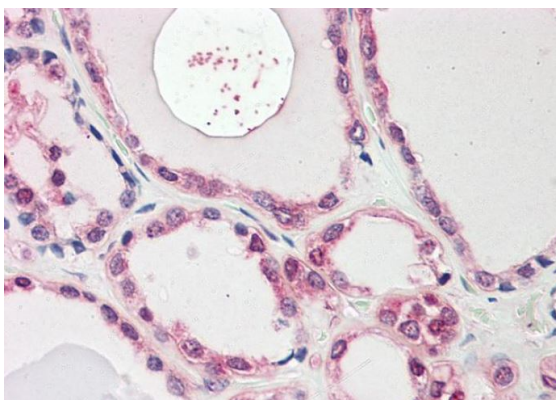
Images



HeLa

ARG41721 anti-NEK7 antibody WB image

Western blot: 35 µg of HeLa cell lysate (in RIPA buffer) stained with ARG41721 anti-NEK7 antibody at 0.05 µg/ml dilution and incubated at RT for 1 hour.



ARG41721 anti-NEK7 antibody IHC-P image

Immunohistochemistry: Paraffin-embedded Human thyroid tissue. Antigen Retrieval: Steam tissue section in Citrate buffer (pH 6.0). The tissue section was stained with ARG41721 anti-NEK7 antibody at 3.75 µg/ml dilution.