

ARG41756 anti-FCN2 antibody

Package: 100 µl
Store at: -20°C

Summary

Product Description	Rabbit Polyclonal antibody recognizes FCN2
Tested Reactivity	Hu, Ms, Rat
Tested Application	WB
Host	Rabbit
Clonality	Polyclonal
Isotype	IgG
Target Name	FCN2
Species	Human
Immunogen	Recombinant fusion protein corresponding to aa. 230-290 of Human FCN2 (NP_004099.2).
Conjugation	Un-conjugated
Alternate Names	Ficolin-B; Hucolin; Ficolin-beta; Collagen/fibrinogen domain-containing protein 2; 37 kDa elastin-binding protein; Ficolin-2; EBP-37; ficolin-2; Serum lectin p35; P35; L-ficolin; FCNL

Application Instructions

Application table	Application	Dilution
	WB	1:500 - 1:2000
Application Note	* The dilutions indicate recommended starting dilutions and the optimal dilutions or concentrations should be determined by the scientist.	
Positive Control	Mouse lung	
Observed Size	34 kDa	

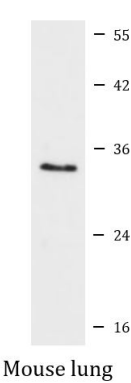
Properties

Form	Liquid
Purification	Affinity purified.
Buffer	PBS (pH 7.3), 0.02% Sodium azide and 50% Glycerol.
Preservative	0.02% Sodium azide
Stabilizer	50% Glycerol
Storage instruction	For continuous use, store undiluted antibody at 2-8°C for up to a week. For long-term storage, aliquot and store at -20°C. Storage in frost free freezers is not recommended. Avoid repeated freeze/thaw cycles. Suggest spin the vial prior to opening. The antibody solution should be gently mixed before use.
Note	For laboratory research only, not for drug, diagnostic or other use.

Bioinformation

Gene Symbol	FCN2
Gene Full Name	ficolin (collagen/fibrinogen domain containing lectin) 2
Background	The product of this gene belongs to the ficolin family of proteins. This family is characterized by the presence of a leader peptide, a short N-terminal segment, followed by a collagen-like region, and a C-terminal fibrinogen-like domain. This gene is predominantly expressed in the liver, and has been shown to have carbohydrate binding and opsonic activities. Alternatively spliced transcript variants encoding different isoforms have been identified. [provided by RefSeq, Jul 2008]
Function	May function in innate immunity through activation of the lectin complement pathway. Calcium-dependent and GlcNAc-binding lectin. Enhances phagocytosis of S.typhimurium by neutrophils, suggesting an opsonic effect via the collagen region. [UniProt]
Calculated Mw	34 kDa
Cellular Localization	Secreted. [UniProt]

Images



ARG41756 anti-FCN2 antibody WB image

Western blot: 25 µg of Mouse lung lysate stained with ARG41756 anti-FCN2 antibody at 1:1000 dilution.