

ARG41780 anti-CPI-17 antibody

Package: 100 µl
Store at: -20°C

Summary

| | |
|---------------------|--|
| Product Description | Rabbit Polyclonal antibody recognizes CPI-17 |
| Tested Reactivity | Hu, Ms, Rat |
| Tested Application | IP, WB |
| Host | Rabbit |
| Clonality | Polyclonal |
| Isotype | IgG |
| Target Name | CPI-17 |
| Species | Human |
| Immunogen | Synthetic peptide of Human CPI-17. |
| Conjugation | Un-conjugated |
| Alternate Names | CPI-17; Protein kinase C-potentiated inhibitor protein of 17 kDa; CPI17; 17 kDa PKC-potentiated inhibitory protein of PP1; PPP1INL; Protein phosphatase 1 regulatory subunit 14A |

Application Instructions

| | | |
|-------------------|--|----------------|
| Application table | Application | Dilution |
| | IP | 1:30 |
| | WB | 1:500 - 1:2000 |
| Application Note | * The dilutions indicate recommended starting dilutions and the optimal dilutions or concentrations should be determined by the scientist. | |
| Positive Control | MCF7 | |
| Observed Size | ~ 20 kDa | |

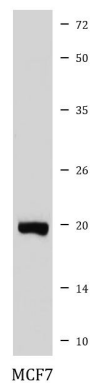
Properties

| | |
|---------------------|---|
| Form | Liquid |
| Purification | Affinity purified. |
| Buffer | PBS (pH 7.4), 150 mM NaCl, 0.02% Sodium azide and 50% Glycerol. |
| Preservative | 0.02% Sodium azide |
| Stabilizer | 50% Glycerol |
| Storage instruction | For continuous use, store undiluted antibody at 2-8°C for up to a week. For long-term storage, aliquot and store at -20°C. Storage in frost free freezers is not recommended. Avoid repeated freeze/thaw cycles. Suggest spin the vial prior to opening. The antibody solution should be gently mixed before use. |
| Note | For laboratory research only, not for drug, diagnostic or other use. |

Bioinformation

| | |
|-----------------------|--|
| Gene Symbol | PPP1R14A |
| Gene Full Name | protein phosphatase 1, regulatory (inhibitor) subunit 14A |
| Background | The protein encoded by this gene belongs to the protein phosphatase 1 (PP1) inhibitor family. This protein is an inhibitor of smooth muscle myosin phosphatase, and has higher inhibitory activity when phosphorylated. Inhibition of myosin phosphatase leads to increased myosin phosphorylation and enhanced smooth muscle contraction. Alternatively spliced transcript variants encoding different isoforms have been noted for this gene. [provided by RefSeq, Sep 2011] |
| Function | Inhibitor of PPP1CA. Has over 1000-fold higher inhibitory activity when phosphorylated, creating a molecular switch for regulating the phosphorylation status of PPP1CA substrates and smooth muscle contraction. [UniProt] |
| Calculated Mw | 17 kDa |
| Cellular Localization | Cytoplasm. [UniProt] |

Images



ARG41780 anti-CPI-17 antibody WB image

Western blot: MCF7 cell lysate stained with ARG41780 anti-CPI-17 antibody.