

ARG41803 anti-CDC37 phospho (Ser13) antibody

Package: 100 µl
Store at: -20°C

Summary

Product Description	Rabbit Polyclonal antibody recognizes CDC37 phospho (Ser13)
Tested Reactivity	Hu, Ms, Rat
Tested Application	IP, WB
Host	Rabbit
Clonality	Polyclonal
Isotype	IgG
Target Name	CDC37
Species	Human
Immunogen	Phosphospecific peptide around Ser13 of Human CDC37.
Conjugation	Un-conjugated
Alternate Names	p50Cdc37; Hsp90 chaperone protein kinase-targeting subunit; Hsp90 co-chaperone Cdc37; P50CDC37

Application Instructions

Application table	Application	Dilution
	IP	1:50
	WB	1:500 - 1:2000
Application Note	* The dilutions indicate recommended starting dilutions and the optimal dilutions or concentrations should be determined by the scientist.	
Positive Control	Jurkat	
Observed Size	~ 46 kDa	

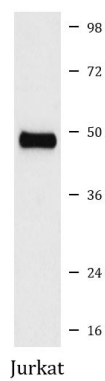
Properties

Form	Liquid
Purification	Affinity purified.
Buffer	PBS (pH 7.4), 150 mM NaCl, 0.02% Sodium azide and 50% Glycerol.
Preservative	0.02% Sodium azide
Stabilizer	50% Glycerol
Storage instruction	For continuous use, store undiluted antibody at 2-8°C for up to a week. For long-term storage, aliquot and store at -20°C. Storage in frost free freezers is not recommended. Avoid repeated freeze/thaw cycles. Suggest spin the vial prior to opening. The antibody solution should be gently mixed before use.
Note	For laboratory research only, not for drug, diagnostic or other use.

Bioinformation

Gene Symbol	CDC37
Gene Full Name	cell division cycle 37
Background	The protein encoded by this gene is highly similar to Cdc 37, a cell division cycle control protein of <i>Sacchromyces cerevisiae</i> . This protein is a molecular chaperone with specific function in cell signal transduction. It has been shown to form complex with Hsp90 and a variety of protein kinases including CDK4, CDK6, SRC, RAF-1, MOK, as well as eIF2 alpha kinases. It is thought to play a critical role in directing Hsp90 to its target kinases. [provided by RefSeq, Jul 2008]
Function	Co-chaperone that binds to numerous kinases and promotes their interaction with the Hsp90 complex, resulting in stabilization and promotion of their activity. [UniProt]
Calculated Mw	44 kDa
PTM	Constitutively sumoylated by UBE2I. [UniProt]
Cellular Localization	Cytoplasm. [UniProt]

Images



ARG41803 anti-CDC37 phospho (Ser13) antibody WB image

Western blot: Jurkat cell lysate stained with ARG41803 anti-CDC37 phospho (Ser13) antibody.