

## ARG41821 anti-SOS1 antibody

Package: 100 µl  
Store at: -20°C

### Summary

Product Description	Rabbit Polyclonal antibody recognizes SOS1
Tested Reactivity	Hu, Ms, Rat
Tested Application	ICC/IF, IHC-P, WB
Host	Rabbit
Clonality	Polyclonal
Isotype	IgG
Target Name	SOS1
Species	Human
Immunogen	Synthetic peptide of Human SOS1.
Conjugation	Un-conjugated
Alternate Names	GGF1; GF1; SOS-1; GINGF; Son of sevenless homolog 1; HGF; NS4

### Application Instructions

Application table	Application	Dilution
	ICC/IF	1:50 - 1:200
	IHC-P	1:50 - 1:200
	WB	1:500 - 1:2000
Application Note	* The dilutions indicate recommended starting dilutions and the optimal dilutions or concentrations should be determined by the scientist.	
Positive Control	HeLa	
Observed Size	~ 155 kDa	

### Properties

Form	Liquid
Purification	Affinity purified.
Buffer	PBS (pH 7.4), 150 mM NaCl, 0.02% Sodium azide and 50% Glycerol.
Preservative	0.02% Sodium azide
Stabilizer	50% Glycerol
Storage instruction	For continuous use, store undiluted antibody at 2-8°C for up to a week. For long-term storage, aliquot and store at -20°C. Storage in frost free freezers is not recommended. Avoid repeated freeze/thaw cycles. Suggest spin the vial prior to opening. The antibody solution should be gently mixed before use.

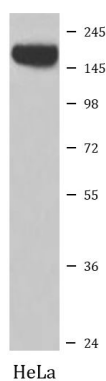
**Note**

For laboratory research only, not for drug, diagnostic or other use.

## Bioinformation

Gene Symbol	SOS1
Gene Full Name	son of sevenless homolog 1 (Drosophila)
Background	This gene encodes a protein that is a guanine nucleotide exchange factor for RAS proteins, membrane proteins that bind guanine nucleotides and participate in signal transduction pathways. GTP binding activates and GTP hydrolysis inactivates RAS proteins. The product of this gene may regulate RAS proteins by facilitating the exchange of GTP for GDP. Mutations in this gene are associated with gingival fibromatosis 1 and Noonan syndrome type 4. [provided by RefSeq, Jul 2008]
Function	Promotes the exchange of Ras-bound GDP by GTP. Catalytic component of a trimeric complex that participates in transduction of signals from Ras to Rac by promoting the Rac-specific guanine nucleotide exchange factor (GEF) activity (By similarity). [UniProt]
Calculated Mw	152 kDa
PTM	Phosphorylation at Ser-1134 and Ser-1161 by RPS6KA3 create YWHAB and YWHAE binding sites and which contribute to the negative regulation of EGF-induced MAPK1/3 phosphorylation. [UniProt]

## Images



ARG41821 anti-SOS1 antibody WB image

Western blot: HeLa cell lysate stained with ARG41821 anti-SOS1 antibody.