

ARG41863
anti-MRPL11 antibodyPackage: 100 µl
Store at: -20°C

Summary

| | |
|---------------------|--|
| Product Description | Rabbit Polyclonal antibody recognizes MRPL11 |
| Tested Reactivity | Hu, Ms, Rat |
| Tested Application | WB |
| Host | Rabbit |
| Clonality | Polyclonal |
| Isotype | IgG |
| Target Name | MRPL11 |
| Species | Human |
| Immunogen | Recombinant fusion protein corresponding to aa. 1-192 of Human MRPL11. (NP_057134.1) |
| Conjugation | Un-conjugated |
| Alternate Names | MRP-L11; 39S ribosomal protein L11, mitochondrial; L11MT; L11mt; CGI-113 |

Application Instructions

| | | |
|-------------------|--|----------------|
| Application table | Application | Dilution |
| | WB | 1:500 - 1:2000 |
| Application Note | * The dilutions indicate recommended starting dilutions and the optimal dilutions or concentrations should be determined by the scientist. | |
| Positive Control | A549 | |
| Observed Size | ~ 19 kDa | |

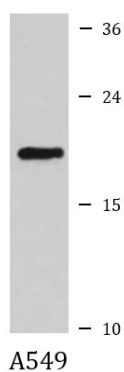
Properties

| | |
|---------------------|---|
| Form | Liquid |
| Purification | Affinity purified. |
| Buffer | PBS (pH 7.3), 0.02% Sodium azide and 50% Glycerol. |
| Preservative | 0.02% Sodium azide |
| Stabilizer | 50% Glycerol |
| Storage instruction | For continuous use, store undiluted antibody at 2-8°C for up to a week. For long-term storage, aliquot and store at -20°C. Storage in frost free freezers is not recommended. Avoid repeated freeze/thaw cycles. Suggest spin the vial prior to opening. The antibody solution should be gently mixed before use. |
| Note | For laboratory research only, not for drug, diagnostic or other use. |

Bioinformation

| | |
|-----------------------|--|
| Gene Symbol | MRPL11 |
| Gene Full Name | mitochondrial ribosomal protein L11 |
| Background | This nuclear gene encodes a 39S subunit component of the mitochondrial ribosome. Alternative splicing results in multiple transcript variants. Pseudogenes for this gene are found on chromosomes 5 and 12. [provided by RefSeq, May 2014] |
| Calculated Mw | 21 kDa |
| Cellular Localization | Mitochondrion. [UniProt] |

Images



ARG41863 anti-MRPL11 antibody WB image

Western blot: 25 µg of A549 cell lysate stained with ARG41863 anti-MRPL11 antibody at 1:1000 dilution.