

ARG41867 anti-RPL11 antibody

Package: 100 µl
Store at: -20°C

Summary

Product Description	Rabbit Polyclonal antibody recognizes RPL11
Tested Reactivity	Hu, Ms, Rat
Tested Application	ICC/IF, WB
Host	Rabbit
Clonality	Polyclonal
Isotype	IgG
Target Name	RPL11
Species	Human
Immunogen	Recombinant fusion protein corresponding to aa. 1-177 of Human RPL11. (NP_001186731.1)
Conjugation	Un-conjugated
Alternate Names	60S ribosomal protein L11; DBA7; L11; CLL-associated antigen KW-12; GIG34

Application Instructions

Application table	Application	Dilution
	ICC/IF	1:50 - 1:200
	WB	1:500 - 1:2000
Application Note	* The dilutions indicate recommended starting dilutions and the optimal dilutions or concentrations should be determined by the scientist.	
Positive Control	HepG2	
Observed Size	~ 18 kDa	

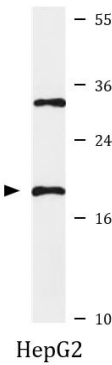
Properties

Form	Liquid
Purification	Affinity purified.
Buffer	PBS (pH 7.3), 0.02% Sodium azide and 50% Glycerol.
Preservative	0.02% Sodium azide
Stabilizer	50% Glycerol
Storage instruction	For continuous use, store undiluted antibody at 2-8°C for up to a week. For long-term storage, aliquot and store at -20°C. Storage in frost free freezers is not recommended. Avoid repeated freeze/thaw cycles. Suggest spin the vial prior to opening. The antibody solution should be gently mixed before use.
Note	For laboratory research only, not for drug, diagnostic or other use.

Bioinformation

Gene Symbol	RPL11
Gene Full Name	ribosomal protein L11
Background	Ribosomes, the organelles that catalyze protein synthesis, consist of a small 40S subunit and a large 60S subunit. Together these subunits are composed of 4 RNA species and approximately 80 structurally distinct proteins. This gene encodes a ribosomal protein that is a component of the 60S subunit. The protein belongs to the L5P family of ribosomal proteins. It is located in the cytoplasm. The protein probably associates with the 5S rRNA. Alternatively spliced transcript variants encoding different isoforms have been found for this gene. As is typical for genes encoding ribosomal proteins, there are multiple processed pseudogenes of this gene dispersed through the genome. [provided by RefSeq, Dec 2010]
Function	Binds to 5S ribosomal RNA (By similarity). Required for rRNA maturation and formation of the 60S ribosomal subunits. Promotes nucleolar location of PML (By similarity). [UniProt]
Calculated Mw	20 kDa
Cellular Localization	Nucleus, nucleolus. Cytoplasm. [UniProt]

Images



ARG41867 anti-RPL11 antibody WB image

Western blot: 25 µg of HepG2 cell lysate stained with ARG41867 anti-RPL11 antibody at 1:1000 dilution.