

ARG41874 anti-CALCRL antibody

Package: 100 µl
Store at: -20°C

Summary

Product Description	Rabbit Polyclonal antibody recognizes CALCRL
Tested Reactivity	Hu, Ms, Rat
Tested Application	WB
Host	Rabbit
Clonality	Polyclonal
Isotype	IgG
Target Name	CALCRL
Species	Human
Immunogen	Recombinant fusion protein corresponding to aa. 392-461 of Human CALCRL. (NP_005786.1)
Conjugation	Un-conjugated
Alternate Names	Calcitonin gene-related peptide type 1 receptor; CRLR; Calcitonin receptor-like receptor; CGRP type 1 receptor; CGRPR

Application Instructions

Application table	Application	Dilution
	WB	1:500 - 1:2000
Application Note	* The dilutions indicate recommended starting dilutions and the optimal dilutions or concentrations should be determined by the scientist.	
Positive Control	A549	
Observed Size	~ 44 kDa	

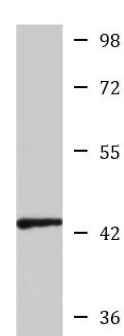
Properties

Form	Liquid
Purification	Affinity purified.
Buffer	PBS (pH 7.3), 0.02% Sodium azide and 50% Glycerol.
Preservative	0.02% Sodium azide
Stabilizer	50% Glycerol
Storage instruction	For continuous use, store undiluted antibody at 2-8°C for up to a week. For long-term storage, aliquot and store at -20°C. Storage in frost free freezers is not recommended. Avoid repeated freeze/thaw cycles. Suggest spin the vial prior to opening. The antibody solution should be gently mixed before use.
Note	For laboratory research only, not for drug, diagnostic or other use.

Bioinformation

Gene Symbol	CALCRL
Gene Full Name	calcitonin receptor-like
Function	Receptor for calcitonin-gene-related peptide (CGRP) together with RAMP1 and receptor for adrenomedullin together with RAMP3 (By similarity). Receptor for adrenomedullin together with RAMP2. The activity of this receptor is mediated by G proteins which activate adenylyl cyclase. [UniProt]
Calculated Mw	53 kDa
Cellular Localization	Cell membrane; Multi-pass membrane protein. [UniProt]

Images



A549

ARG41874 anti-CALCRL antibody WB image

Western blot: 25 µg of A549 cell lysate stained with ARG41874 anti-CALCRL antibody at 1:1000 dilution.