

ARG41880
anti-Zic1 antibodyPackage: 100 µl
Store at: -20°C**Summary**

Product Description	Rabbit Polyclonal antibody recognizes Zic1
Tested Reactivity	Hu, Ms, Rat
Tested Application	WB
Host	Rabbit
Clonality	Polyclonal
Isotype	IgG
Target Name	Zic1
Species	Human
Immunogen	Recombinant fusion protein corresponding to aa. 120-210 of Human Zic1. (NP_003403.2)
Conjugation	Un-conjugated
Alternate Names	Zinc finger protein 201; Zinc finger protein ZIC 1; ZIC; Zinc finger protein of the cerebellum 1; ZNF201

Application Instructions

Application table	Application	Dilution
	WB	1:500 - 1:2000
Application Note	* The dilutions indicate recommended starting dilutions and the optimal dilutions or concentrations should be determined by the scientist.	
Positive Control	U-251MG	
Observed Size	~ 50 kDa	

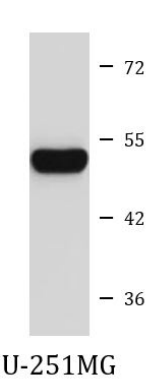
Properties

Form	Liquid
Purification	Affinity purified.
Buffer	PBS (pH 7.3), 0.02% Sodium azide and 50% Glycerol.
Preservative	0.02% Sodium azide
Stabilizer	50% Glycerol
Storage instruction	For continuous use, store undiluted antibody at 2-8°C for up to a week. For long-term storage, aliquot and store at -20°C. Storage in frost free freezers is not recommended. Avoid repeated freeze/thaw cycles. Suggest spin the vial prior to opening. The antibody solution should be gently mixed before use.
Note	For laboratory research only, not for drug, diagnostic or other use.

Bioinformation

Gene Symbol	ZIC1
Gene Full Name	Zic family member 1
Background	This gene encodes a member of the ZIC family of C2H2-type zinc finger proteins. Members of this family are important during development. Aberrant expression of this gene is seen in medulloblastoma, a childhood brain tumor. This gene is closely linked to the gene encoding zinc finger protein of the cerebellum 4, a related family member on chromosome 3. This gene encodes a transcription factor that can bind and transactivate the apolipoprotein E gene. [provided by RefSeq, Jul 2008]
Function	Acts as a transcriptional activator. Involved in neurogenesis. Plays important roles in the early stage of organogenesis of the CNS, as well as during dorsal spinal cord development and maturation of the cerebellum. Involved in the spatial distribution of mossy fiber (MF) neurons within the pontine gray nucleus (PGN). Plays a role in the regulation of MF axon pathway choice. Promotes MF migration towards ipsilaterally-located cerebellar territories. May have a role in shear flow mechanotransduction in osteocytes. Retains nuclear GLI1 and GLI3 in the cytoplasm. Binds to the minimal GLI-consensus sequence 5'-TGGGTGGTC-3' (By similarity). [UniProt]
Calculated Mw	48 kDa
Cellular Localization	Nucleus. Cytoplasm. Note=Localizes in the cytoplasm in presence of MDFIC overexpression. [UniProt]

Images



ARG41880 anti-Zic1 antibody WB image

Western blot: 25 µg of U-251MG cell lysate stained with ARG41880 anti-Zic1 antibody at 1:1000 dilution.