

ARG41884 anti-STAT4 antibody

Package: 100 µl
Store at: -20°C

Summary

Product Description	Rabbit Polyclonal antibody recognizes STAT4
Tested Reactivity	Hu, Ms, Rat
Tested Application	ICC/IF, IHC-P, WB
Host	Rabbit
Clonality	Polyclonal
Isotype	IgG
Target Name	STAT4
Species	Human
Immunogen	Recombinant fusion protein corresponding to aa. 569-748 of Human STAT4. (NP_003142.1)
Conjugation	Un-conjugated
Alternate Names	SLEB11; Signal transducer and activator of transcription 4

Application Instructions

Application table	Application	Dilution
	ICC/IF	1:50 - 1:200
	IHC-P	1:50 - 1:200
	WB	1:500 - 1:2000
Application Note	* The dilutions indicate recommended starting dilutions and the optimal dilutions or concentrations should be determined by the scientist.	

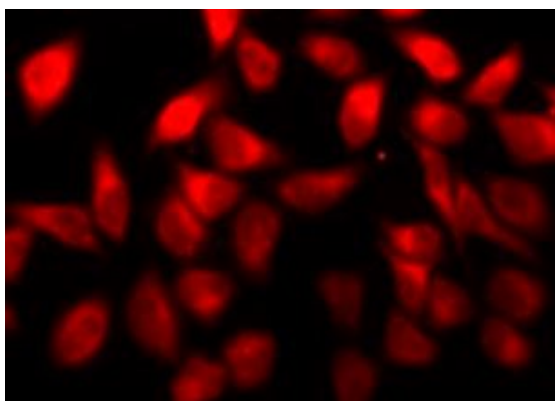
Properties

Form	Liquid
Purification	Affinity purified.
Buffer	PBS (pH 7.3), 0.02% Sodium azide and 50% Glycerol.
Preservative	0.02% Sodium azide
Stabilizer	50% Glycerol
Storage instruction	For continuous use, store undiluted antibody at 2-8°C for up to a week. For long-term storage, aliquot and store at -20°C. Storage in frost free freezers is not recommended. Avoid repeated freeze/thaw cycles. Suggest spin the vial prior to opening. The antibody solution should be gently mixed before use.
Note	For laboratory research only, not for drug, diagnostic or other use.

Bioinformation

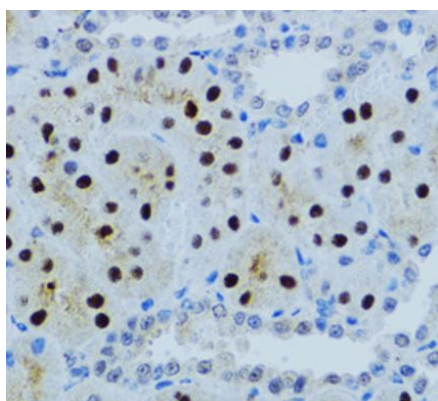
Gene Symbol	STAT4
Gene Full Name	signal transducer and activator of transcription 4
Background	The protein encoded by this gene is a member of the STAT family of transcription factors. In response to cytokines and growth factors, STAT family members are phosphorylated by the receptor associated kinases, and then form homo- or heterodimers that translocate to the cell nucleus where they act as transcription activators. This protein is essential for mediating responses to IL12 in lymphocytes, and regulating the differentiation of T helper cells. Mutations in this gene may be associated with systemic lupus erythematosus and rheumatoid arthritis. Alternate splicing results in multiple transcript variants that encode the same protein. [provided by RefSeq, Aug 2011]
Function	Carries out a dual function: signal transduction and activation of transcription. Involved in IL12 signaling. [UniProt]
Calculated Mw	86 kDa
PTM	Tyrosine phosphorylated. Serine phosphorylation is also required for maximal transcriptional activity (By similarity). [UniProt]
Cellular Localization	Cytoplasm. Nucleus. Note=Translocated into the nucleus in response to phosphorylation. [UniProt]

Images



ARG41884 anti-STAT4 antibody ICC/IF image

Immunofluorescence: MCF7 cells stained with ARG41884 anti-STAT4 antibody.



ARG41884 anti-STAT4 antibody IHC-P image

Immunohistochemistry: Paraffin-embedded Rat kidney tissue stained with ARG41884 anti-STAT4 antibody 1:100 dilution.