

ARG41936 anti-Glutaminase antibody

Package: 100 µl
Store at: -20°C

Summary

Product Description	Rabbit Polyclonal antibody recognizes Glutaminase
Tested Reactivity	Hu
Tested Application	FACS, ICC/IF, IHC-P, WB
Specificity	This antibody recognizes all three isoforms: KGA, GAM and GAC.
Host	Rabbit
Clonality	Polyclonal
Isotype	IgG
Target Name	Glutaminase
Species	Human
Immunogen	Synthetic peptide of Human Glutaminase.
Conjugation	Un-conjugated
Alternate Names	EC 3.5.1.2; AAD20; L-glutamine amidohydrolase; KGA; Glutaminase kidney isoform, mitochondrial; GAM; K-glutaminase; GLS; GAC; GLS1

Application Instructions

Application table	Application	Dilution
	FACS	1:50
	ICC/IF	1:50
	IHC-P	1:50
	WB	1:2000
Application Note	* The dilutions indicate recommended starting dilutions and the optimal dilutions or concentrations should be determined by the scientist.	
Positive Control	Jurkat	
Observed Size	65 and 71 kDa	

Properties

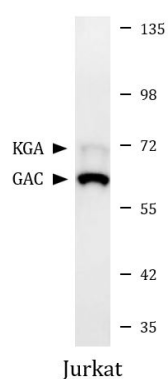
Form	Liquid
Purification	Affinity purified.
Buffer	50 mM Tris-Glycine (pH 7.4), 150 mM NaCl, 0.01% Sodium azide, 40% Glycerol and 0.05% BSA.
Preservative	0.01% Sodium azide
Stabilizer	40% Glycerol and 0.05% BSA

Concentration	Batch dependent
Storage instruction	For continuous use, store undiluted antibody at 2-8°C for up to a week. For long-term storage, aliquot and store at -20°C. Storage in frost free freezers is not recommended. Avoid repeated freeze/thaw cycles. Suggest spin the vial prior to opening. The antibody solution should be gently mixed before use.
Note	For laboratory research only, not for drug, diagnostic or other use.

Bioinformation

Gene Symbol	GLS
Gene Full Name	glutaminase
Background	This gene encodes the K-type mitochondrial glutaminase. The encoded protein is an phosphate-activated amidohydrolase that catalyzes the hydrolysis of glutamine to glutamate and ammonia. This protein is primarily expressed in the brain and kidney plays an essential role in generating energy for metabolism, synthesizing the brain neurotransmitter glutamate and maintaining acid-base balance in the kidney. Alternate splicing results in multiple transcript variants. [provided by RefSeq, Jan 2012]
Function	Catalyzes the first reaction in the primary pathway for the renal catabolism of glutamine. Plays a role in maintaining acid-base homeostasis. Regulates the levels of the neurotransmitter glutamate in the brain. Isoform 2 lacks catalytic activity. [UniProt]
Highlight	Related products: Glutaminase antibodies ; Glutaminase ELISA Kits ; Anti-Rabbit IgG secondary antibodies ; Related news: TCA intermediate fumarate promotes mitobiogenesis
Calculated Mw	73 kDa
Cellular Localization	Isoform 1: Cytoplasm, cytosol. Isoform 3: Mitochondrion. [UniProt]

Images



ARG41936 anti-Glutaminase antibody WB image

Western blot: Jurkat cell lysate stained with ARG41936 anti-Glutaminase antibody at 1:1000 dilution.