

ARG41939 anti-Glutaminase (KGA) antibody

Package: 100 µl
Store at: -20°C

Summary

| | |
|---------------------|---|
| Product Description | Rabbit Polyclonal antibody recognizes Glutaminase (KGA) |
| Tested Reactivity | Hu, Ms, Rat |
| Tested Application | ICC/IF, WB |
| Specificity | This antibody recognizes a specific isoform: KGA. |
| Host | Rabbit |
| Clonality | Polyclonal |
| Isotype | IgG |
| Target Name | Glutaminase (KGA) |
| Species | Human |
| Immunogen | Recombinant fusion protein corresponding to aa. 610-669 of Human Glutaminase (KGA) (NP_055720.3). |
| Conjugation | Un-conjugated |
| Alternate Names | EC 3.5.1.2; AAD20; L-glutamine amidohydrolase; KGA; Glutaminase kidney isoform, mitochondrial; GAM; K-glutaminase; GLS; GAC; GLS1 |

Application Instructions

| | | |
|-------------------|--|----------------|
| Application table | Application | Dilution |
| | ICC/IF | 1:50 - 1:200 |
| | WB | 1:500 - 1:2000 |
| Application Note | * The dilutions indicate recommended starting dilutions and the optimal dilutions or concentrations should be determined by the scientist. | |
| Positive Control | SW620 | |
| Observed Size | ~ 69 kDa | |

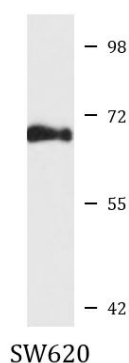
Properties

| | |
|---------------------|---|
| Form | Liquid |
| Purification | Affinity purified. |
| Buffer | PBS (pH 7.3), 0.02% Sodium azide and 50% Glycerol. |
| Preservative | 0.02% Sodium azide |
| Stabilizer | 50% Glycerol |
| Storage instruction | For continuous use, store undiluted antibody at 2-8°C for up to a week. For long-term storage, aliquot and store at -20°C. Storage in frost free freezers is not recommended. Avoid repeated freeze/thaw cycles. Suggest spin the vial prior to opening. The antibody solution should be gently mixed before use. |

Bioinformation

| | |
|-----------------------|--|
| Gene Symbol | GLS |
| Gene Full Name | glutaminase |
| Background | This gene encodes the K-type mitochondrial glutaminase. The encoded protein is an phosphate-activated amidohydrolase that catalyzes the hydrolysis of glutamine to glutamate and ammonia. This protein is primarily expressed in the brain and kidney plays an essential role in generating energy for metabolism, synthesizing the brain neurotransmitter glutamate and maintaining acid-base balance in the kidney. Alternate splicing results in multiple transcript variants. [provided by RefSeq, Jan 2012] |
| Function | Catalyzes the first reaction in the primary pathway for the renal catabolism of glutamine. Plays a role in maintaining acid-base homeostasis. Regulates the levels of the neurotransmitter glutamate in the brain. Isoform 2 lacks catalytic activity. [UniProt] |
| Highlight | Related products: Glutaminase antibodies ; Glutaminase ELISA Kits ; Anti-Rabbit IgG secondary antibodies ; Related news: TCA intermediate fumarate promotes mitobiogenesis |
| Calculated Mw | 73 kDa |
| Cellular Localization | Isoform 1: Cytoplasm, cytosol. Isoform 3: Mitochondrion. [UniProt] |

Images



ARG41939 anti-Glutaminase (KGA) antibody WB image

Western blot: 25 µg of SW620 cell lysate stained with ARG41939 anti-Glutaminase (KGA) antibody at 1:1000 dilution.