

ARG41970 anti-CDC6 antibody

Package: 50 µg
Store at: -20°C

Summary

Product Description	Rabbit Polyclonal antibody recognizes CDC6
Tested Reactivity	Hu, Rat
Tested Application	IHC-P, WB
Host	Rabbit
Clonality	Polyclonal
Isotype	IgG
Target Name	CDC6
Species	Human
Immunogen	Recombinant protein corresponding to V147-A549 of Human CDC6.
Conjugation	Un-conjugated
Alternate Names	p62; HsCDC18; CDC18L; Cdc18-related protein; Cell division control protein 6 homolog; CDC6-related protein; HsCdc18; cdc6; HsCDC6

Application Instructions

Application table	Application	Dilution
	IHC-P	1:200 - 1:1000
	WB	1:500 - 1:2000
Application Note	* The dilutions indicate recommended starting dilutions and the optimal dilutions or concentrations should be determined by the scientist.	
Observed Size	~ 63 kDa	

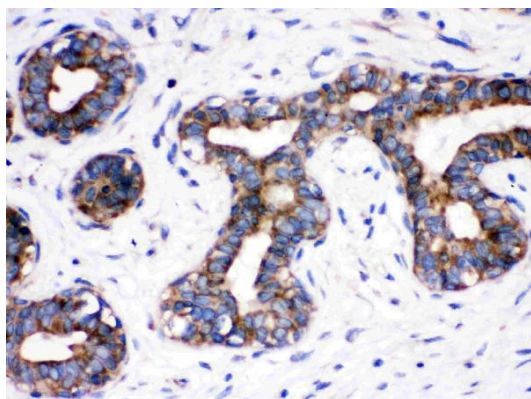
Properties

Form	Liquid
Purification	Affinity purification with immunogen.
Buffer	0.2% Na ₂ HPO ₄ , 0.9% NaCl, 0.05% Sodium azide and 5% BSA.
Preservative	0.05% Sodium azide
Stabilizer	5% BSA
Concentration	0.5 mg/ml
Storage instruction	For continuous use, store undiluted antibody at 2-8°C for up to a week. For long-term storage, aliquot and store at -20°C or below. Storage in frost free freezers is not recommended. Avoid repeated freeze/thaw cycles. Suggest spin the vial prior to opening. The antibody solution should be gently mixed before use.

Bioinformation

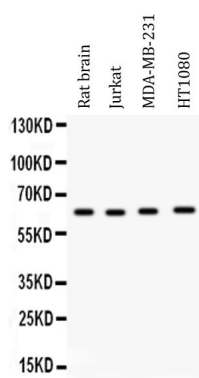
Gene Symbol	CDC6
Gene Full Name	cell division cycle 6
Background	The protein encoded by this gene is highly similar to <i>Saccharomyces cerevisiae</i> Cdc6, a protein essential for the initiation of DNA replication. This protein functions as a regulator at the early steps of DNA replication. It localizes in cell nucleus during cell cycle G1, but translocates to the cytoplasm at the start of S phase. The subcellular translocation of this protein during cell cycle is regulated through its phosphorylation by Cdks. Transcription of this protein was reported to be regulated in response to mitogenic signals through transcriptional control mechanism involving E2F proteins. [provided by RefSeq, Jul 2008]
Function	Involved in the initiation of DNA replication. Also participates in checkpoint controls that ensure DNA replication is completed before mitosis is initiated. [UniProt]
Calculated Mw	63 kDa
Cellular Localization	Nucleus. Cytoplasm. Note=The protein is nuclear in G1 and cytoplasmic in S-phase cells (PubMed:9566895). [UniProt]

Images



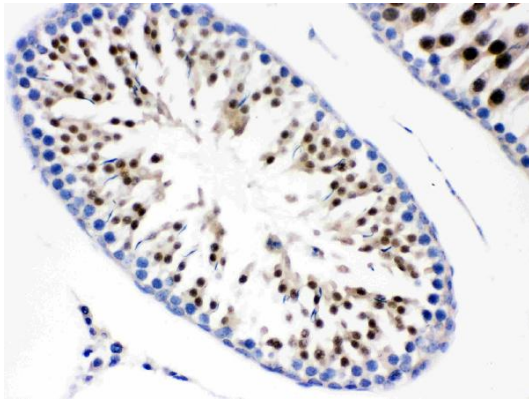
ARG41970 anti-CDC6 antibody IHC-P image

Immunohistochemistry: Paraffin-embedded Human mammary cancer tissue stained with ARG41970 anti-CDC6 antibody.



ARG41970 anti-CDC6 antibody WB image

Western blot: 50 µg of Rat brain, 40 µg of Jurkat, 40 µg of MDA-MB-231 and 40 µg of HT1080 whole cell lysates stained with ARG41970 anti-CDC6 antibody at 0.5 µg/ml dilution.



ARG41970 anti-CDC6 antibody IHC-P image

Immunohistochemistry: Paraffin-embedded Rat testis tissue stained with ARG41970 anti-CDC6 antibody.