

ARG41984 anti-NSD3 antibody

Package: 100 µl
Store at: -20°C

Summary

Product Description	Rabbit Polyclonal antibody recognizes NSD3
Tested Reactivity	Hu, Ms, Rat
Tested Application	FACS, WB
Host	Rabbit
Clonality	Polyclonal
Isotype	IgG
Target Name	NSD3
Species	Human
Immunogen	Synthetic peptide of Human NSD3.
Conjugation	Un-conjugated
Alternate Names	Wolf-Hirschhorn syndrome candidate 1-like protein 1; WHSC1-like 1 isoform 9 with methyltransferase activity to lysine; EC 2.1.1.43; WHSC1-like protein 1; Histone-lysine N-methyltransferase NSD3; NSD3; Protein whistle; Nuclear SET domain-containing protein 3; pp14328

Application Instructions

Application table	Application	Dilution
	FACS	1:30
	WB	1:1000 - 1:5000
Application Note	* The dilutions indicate recommended starting dilutions and the optimal dilutions or concentrations should be determined by the scientist.	
Positive Control	MCF7	

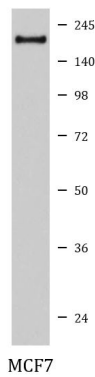
Properties

Form	Liquid
Purification	Affinity purified.
Buffer	PBS (pH 7.4), 150 mM NaCl, 0.02% Sodium azide and 50% Glycerol.
Preservative	0.02% Sodium azide
Stabilizer	50% Glycerol
Storage instruction	For continuous use, store undiluted antibody at 2-8°C for up to a week. For long-term storage, aliquot and store at -20°C. Storage in frost free freezers is not recommended. Avoid repeated freeze/thaw cycles. Suggest spin the vial prior to opening. The antibody solution should be gently mixed before use.
Note	For laboratory research only, not for drug, diagnostic or other use.

Bioinformation

Gene Symbol	WHSC1L1
Gene Full Name	Wolf-Hirschhorn syndrome candidate 1-like 1
Background	This gene is related to the Wolf-Hirschhorn syndrome candidate-1 gene and encodes a protein with PWWP (proline-tryptophan-tryptophan-proline) domains. This protein methylates histone H3 at lysine residues 4 and 27, which represses gene transcription. Two alternatively spliced variants have been described. [provided by RefSeq, May 2015]
Function	Histone methyltransferase. Preferentially methylates 'Lys-4' and 'Lys-27' of histone H3. H3 'Lys-4' methylation represents a specific tag for epigenetic transcriptional activation, while 'Lys-27' is a mark for transcriptional repression. [UniProt]
Calculated Mw	162 kDa
Cellular Localization	Nucleus. Chromosome. [UniProt]

Images



ARG41984 anti-NSD3 antibody WB image

Western blot: MCF7 cell lysate stained with ARG41984 anti-NSD3 antibody.