

ARG42024 anti-NSF antibody

Package: 50 µg
Store at: -20°C

Summary

Product Description	Rabbit Polyclonal antibody recognizes NSF
Tested Reactivity	Hu, Ms, Rat
Tested Application	IHC-P, WB
Host	Rabbit
Clonality	Polyclonal
Isotype	IgG
Target Name	NSF
Species	Human
Immunogen	Recombinant protein corresponding to N620-D744 of Human NSF.
Conjugation	Un-conjugated
Alternate Names	SKD2; N-ethylmaleimide-sensitive fusion protein; Vesicular-fusion protein NSF; Vesicle-fusing ATPase; NEM-sensitive fusion protein; EC 3.6.4.6

Application Instructions

Application table	Application	Dilution
	IHC-P	1:200 - 1:1000
	WB	1:500 - 1:2000
Application Note	IHC-P: Antigen Retrieval: Heat mediation was performed in Citrate buffer (pH 6.0, epitope retrieval solution) for 20 min. * The dilutions indicate recommended starting dilutions and the optimal dilutions or concentrations should be determined by the scientist.	
Observed Size	~ 83 kDa	

Properties

Form	Liquid
Purification	Affinity purification with immunogen.
Buffer	0.2% Na ₂ HPO ₄ , 0.9% NaCl, 0.05% Sodium azide and 4% Trehalose.
Preservative	0.05% Sodium azide
Stabilizer	4% Trehalose
Concentration	0.5 mg/ml
Storage instruction	For continuous use, store undiluted antibody at 2-8°C for up to a week. For long-term storage, aliquot and store at -20°C or below. Storage in frost free freezers is not recommended. Avoid repeated freeze/thaw cycles. Suggest spin the vial prior to opening. The antibody solution should be gently mixed

before use.

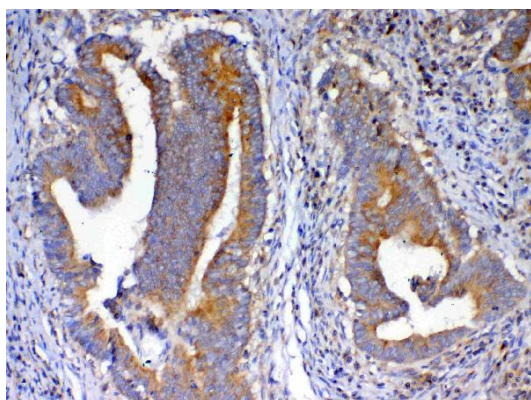
Note

For laboratory research only, not for drug, diagnostic or other use.

Bioinformation

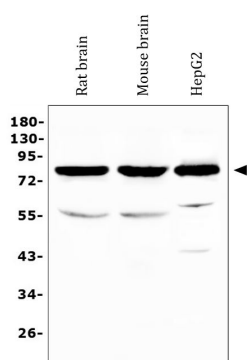
Gene Symbol	NSF
Gene Full Name	N-ethylmaleimide-sensitive factor
Function	Required for vesicle-mediated transport. Catalyzes the fusion of transport vesicles within the Golgi cisternae. Is also required for transport from the endoplasmic reticulum to the Golgi stack. Seems to function as a fusion protein required for the delivery of cargo proteins to all compartments of the Golgi stack independent of vesicle origin. Interaction with AMPAR subunit GRIA2 leads to influence GRIA2 membrane cycling (By similarity). [UniProt]
Calculated Mw	83 kDa
PTM	Phosphorylation at Ser-569 interferes with homohexamerization. [UniProt]
Cellular Localization	Cytoplasm. [UniProt]

Images



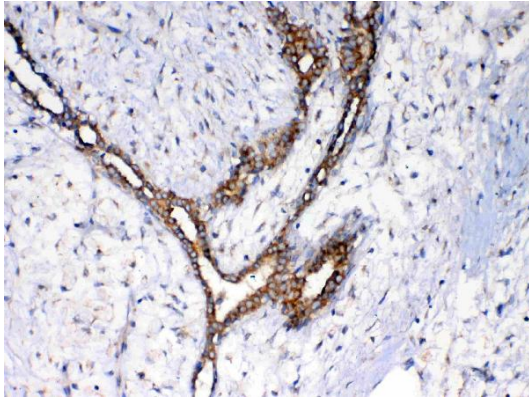
ARG42024 anti-NSF antibody IHC-P image

Immunohistochemistry: Paraffin-embedded Human intestinal cancer tissue. Antigen Retrieval: Heat mediation was performed in Citrate buffer (pH 6.0, epitope retrieval solution) for 20 min. The tissue section was blocked with 10% goat serum. The tissue section was then stained with ARG42024 anti-NSF antibody at 1 µg/ml dilution, overnight at 4°C.



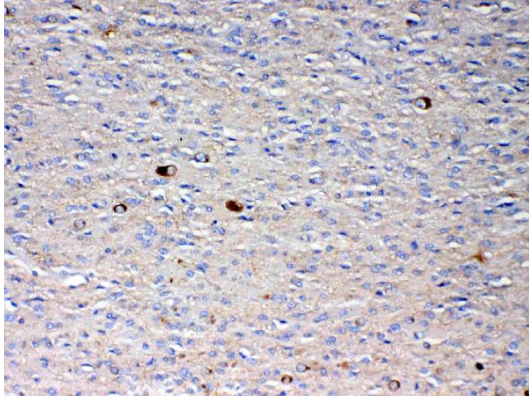
ARG42024 anti-NSF antibody WB image

Western blot: 50 µg of samples under reducing conditions. Rat brain, Mouse brain and HepG2 cell lysates stained with ARG42024 anti-NSF antibody at 0.5 µg/ml dilution, overnight at 4°C.



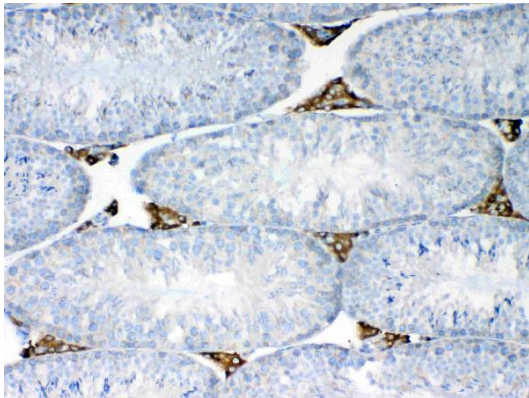
ARG42024 anti-NSF antibody IHC-P image

Immunohistochemistry: Paraffin-embedded Human mammary cancer tissue. Antigen Retrieval: Heat mediation was performed in Citrate buffer (pH 6.0, epitope retrieval solution) for 20 min. The tissue section was blocked with 10% goat serum. The tissue section was then stained with ARG42024 anti-NSF antibody at 1 µg/ml dilution, overnight at 4°C.



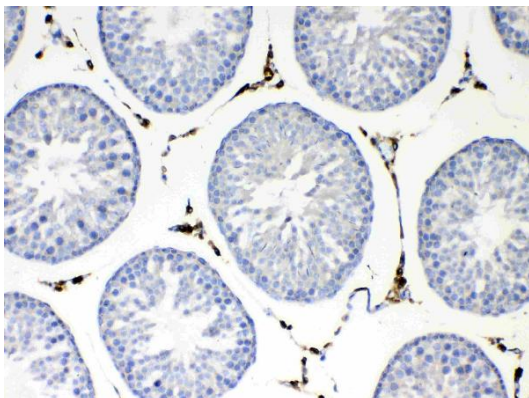
ARG42024 anti-NSF antibody IHC-P image

Immunohistochemistry: Paraffin-embedded Human glioma tissue. Antigen Retrieval: Heat mediation was performed in Citrate buffer (pH 6.0, epitope retrieval solution) for 20 min. The tissue section was blocked with 10% goat serum. The tissue section was then stained with ARG42024 anti-NSF antibody at 1 µg/ml dilution, overnight at 4°C.



ARG42024 anti-NSF antibody IHC-P image

Immunohistochemistry: Paraffin-embedded Mouse testis tissue. Antigen Retrieval: Heat mediation was performed in Citrate buffer (pH 6.0, epitope retrieval solution) for 20 min. The tissue section was blocked with 10% goat serum. The tissue section was then stained with ARG42024 anti-NSF antibody at 1 µg/ml dilution, overnight at 4°C.



ARG42024 anti-NSF antibody IHC-P image

Immunohistochemistry: Paraffin-embedded Rat testis tissue. Antigen Retrieval: Heat mediation was performed in Citrate buffer (pH 6.0, epitope retrieval solution) for 20 min. The tissue section was blocked with 10% goat serum. The tissue section was then stained with ARG42024 anti-NSF antibody at 1 µg/ml dilution, overnight at 4°C.