

ARG42028 anti-NSF antibody

Package: 100 µl
Store at: -20°C

Summary

Product Description	Rabbit Polyclonal antibody recognizes NSF
Tested Reactivity	Hu, Ms, Rat
Tested Application	ICC/IF, IP, WB
Host	Rabbit
Clonality	Polyclonal
Isotype	IgG
Target Name	NSF
Species	Human
Immunogen	Recombinant fusion protein corresponding to aa. 1-250 of Human NSF (NP_006169.2).
Conjugation	Un-conjugated
Alternate Names	SKD2; N-ethylmaleimide-sensitive fusion protein; Vesicular-fusion protein NSF; Vesicle-fusing ATPase; NEM-sensitive fusion protein; EC 3.6.4.6

Application Instructions

Application table	<table> <tr> <th>Application</th><th>Dilution</th></tr> <tr> <td>ICC/IF</td><td>1:500 - 1:2000</td></tr> <tr> <td>IP</td><td>Assay-dependent</td></tr> <tr> <td>WB</td><td>1:500 - 1:2000</td></tr> </table>	Application	Dilution	ICC/IF	1:500 - 1:2000	IP	Assay-dependent	WB	1:500 - 1:2000
Application	Dilution								
ICC/IF	1:500 - 1:2000								
IP	Assay-dependent								
WB	1:500 - 1:2000								
Application Note	* The dilutions indicate recommended starting dilutions and the optimal dilutions or concentrations should be determined by the scientist.								
Positive Control	Rat brain								
Observed Size	~ 80 kDa								

Properties

Form	Liquid
Purification	Affinity purified.
Buffer	PBS (pH 7.3), 0.02% Sodium azide and 50% Glycerol.
Preservative	0.02% Sodium azide
Stabilizer	50% Glycerol
Storage instruction	For continuous use, store undiluted antibody at 2-8°C for up to a week. For long-term storage, aliquot and store at -20°C. Storage in frost free freezers is not recommended. Avoid repeated freeze/thaw cycles. Suggest spin the vial prior to opening. The antibody solution should be gently mixed before use.

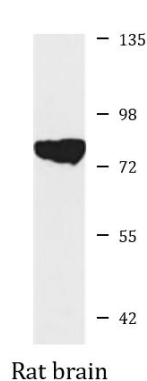
Note

For laboratory research only, not for drug, diagnostic or other use.

Bioinformation

Gene Symbol	NSF
Gene Full Name	N-ethylmaleimide-sensitive factor
Function	Required for vesicle-mediated transport. Catalyzes the fusion of transport vesicles within the Golgi cisternae. Is also required for transport from the endoplasmic reticulum to the Golgi stack. Seems to function as a fusion protein required for the delivery of cargo proteins to all compartments of the Golgi stack independent of vesicle origin. Interaction with AMPAR subunit GRIA2 leads to influence GRIA2 membrane cycling (By similarity). [UniProt]
Calculated Mw	83 kDa
PTM	Phosphorylation at Ser-569 interferes with homohexamerization. [UniProt]
Cellular Localization	Cytoplasm. [UniProt]

Images



ARG42028 anti-NSF antibody WB image

Western blot: 25 µg of Rat brain lysate stained with ARG42028 anti-NSF antibody at 1:1000 dilution.