

## ARG42041 anti-Connexin 36 antibody

Package: 100 µl  
Store at: -20°C

### Summary

|                     |   |
|---------------------|---|
| Product Description | Rabbit Polyclonal antibody recognizes Connexin 36   |
| Tested Reactivity   | Hu, Ms, Rat   |
| Tested Application  | IHC-P, WB   |
| Host                | Rabbit  |
| Clonality           | Polyclonal  |
| Isotype             | IgG   |
| Target Name         | Connexin 36   |
| Species             | Human   |
| Immunogen           | KLH-conjugated synthetic peptide between aa. 291-321 of Human Connexin 36.                |
| Conjugation         | Un-conjugated   |
| Alternate Names     | GJA9; Cx36; Gap junction delta-2 protein; CX36; Gap junction alpha-9 protein; Connexin-36 |

### Application Instructions

|                   |  |              |
|-------------------|--|--------------|
| Application table | Application  | Dilution     |
|                   | IHC-P  | 1:50 - 1:100 |
|                   | WB   | 1:2000       |
| Application Note  | * The dilutions indicate recommended starting dilutions and the optimal dilutions or concentrations should be determined by the scientist. |              |
| Positive Control  | Human brain  |              |
| Observed Size     | ~ 36 kDa   |              |

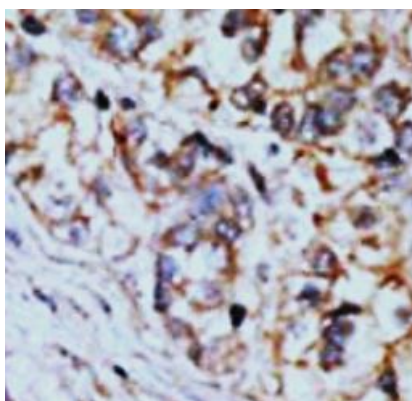
### Properties

|                     |  |
|---------------------|--|
| Form                | Liquid   |
| Purification        | Purification with Protein G.   |
| Buffer              | PBS and 0.09% (W/V) Sodium azide.  |
| Preservative        | 0.09% (W/V) Sodium azide.  |
| Storage instruction | For continuous use, store undiluted antibody at 2-8°C for up to a week. For long-term storage, aliquot and store at -20°C or below. Storage in frost free freezers is not recommended. Avoid repeated freeze/thaw cycles. Suggest spin the vial prior to opening. The antibody solution should be gently mixed before use. |
| Note                | For laboratory research only, not for drug, diagnostic or other use.   |

## Bioinformation

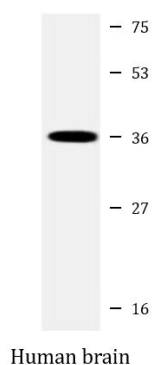
|                       |   |
|-----------------------|---|
| Gene Symbol           | GJD2  |
| Gene Full Name        | gap junction protein, delta 2, 36kDa  |
| Background            | This gene encodes a member of the connexin protein family. Connexins are gap junction proteins which are arranged in groups of 6 around a central pore to form a connexon, a component of the gap junction intercellular channel. The channels formed by this protein allow cationic molecule exchange between human beta cells and may function in the regulation of insulin secretion. [provided by RefSeq, Oct 2012] |
| Function              | One gap junction consists of a cluster of closely packed pairs of transmembrane channels, the connexons, through which materials of low MW diffuse from one cell to a neighboring cell. [UniProt]   |
| Calculated Mw         | 36 kDa  |
| Cellular Localization | Cell membrane; Multi-pass membrane protein. Cell junction, gap junction. [UniProt]  |

## Images



ARG42041 anti-Connexin 36 antibody IHC-P image

Immunohistochemistry: Formalin-fixed and paraffin-embedded Human hepatocarcinoma tissue stained with ARG42041 anti-Connexin 36 antibody.



ARG42041 anti-Connexin 36 antibody WB image

Western blot: 20 µg of Human brain lysate stained with ARG42041 anti-Connexin 36 antibody at 1:2000 dilution.